

APP CRS	Rwy Idg	5101
076°	TDZE	3305
	Apt Elev	3313

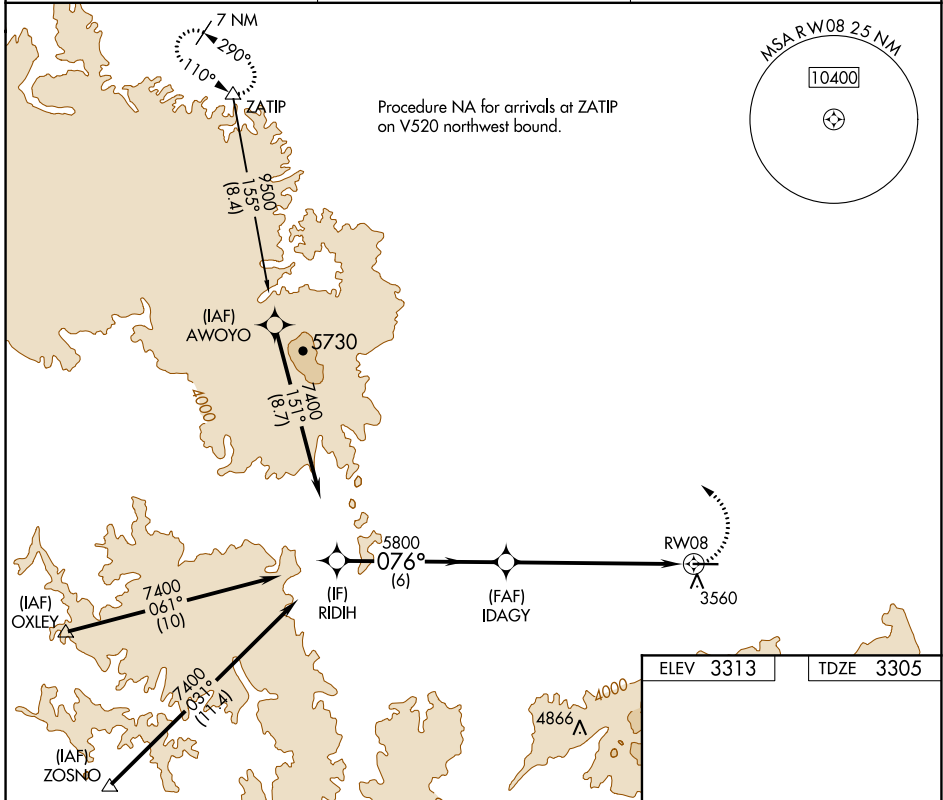
RNAV (GPS) RWY 8

IDAHO COUNTY (GIC)

⚠ Circling NA south of Rwy 8-26. Rwy 8 Helicopter visibility reduction below $\frac{3}{4}$ SM NA. DME/DME RNP-0.3 NA.

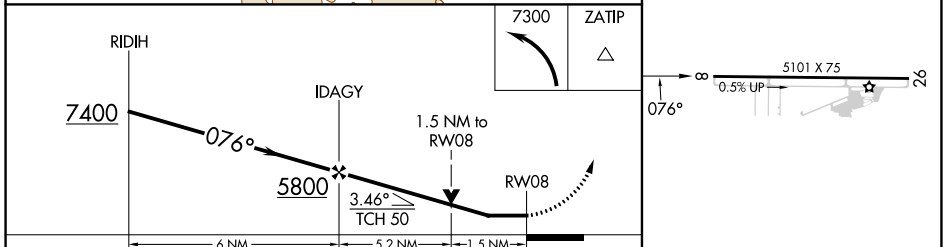
⚠ MISSED APPROACH: Climbing left turn to 7300 direct ZATIP and hold.

AWOS-3 118.175	SEATTLE CENTER 123.95 290.55	CTAF 122.8
--------------------------	--	----------------------



NW-1, 16 MAY 2024 to 13 JUN 2024

NW-1, 16 MAY 2024 to 13 JUN 2024



CATEGORY	A	B	C	D	
LNNAV MDA	3900-1	595 (600-1)	3900-1 $\frac{3}{4}$	595 (600-1 $\frac{3}{4}$)	
C CIRCLING	3900-1	587 (600-1)	3900-1 $\frac{3}{4}$ 587 (600-1 $\frac{3}{4}$)	3900-2 587 (600-2)	MIRL Rwy 8-26 ⚠ REIL Rwy 8 ⚠