

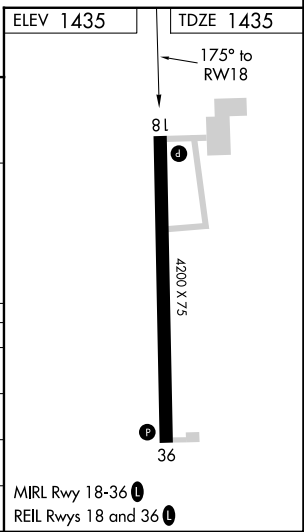
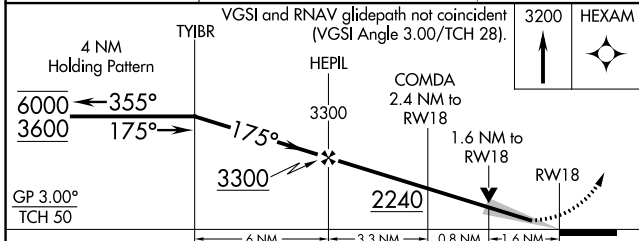
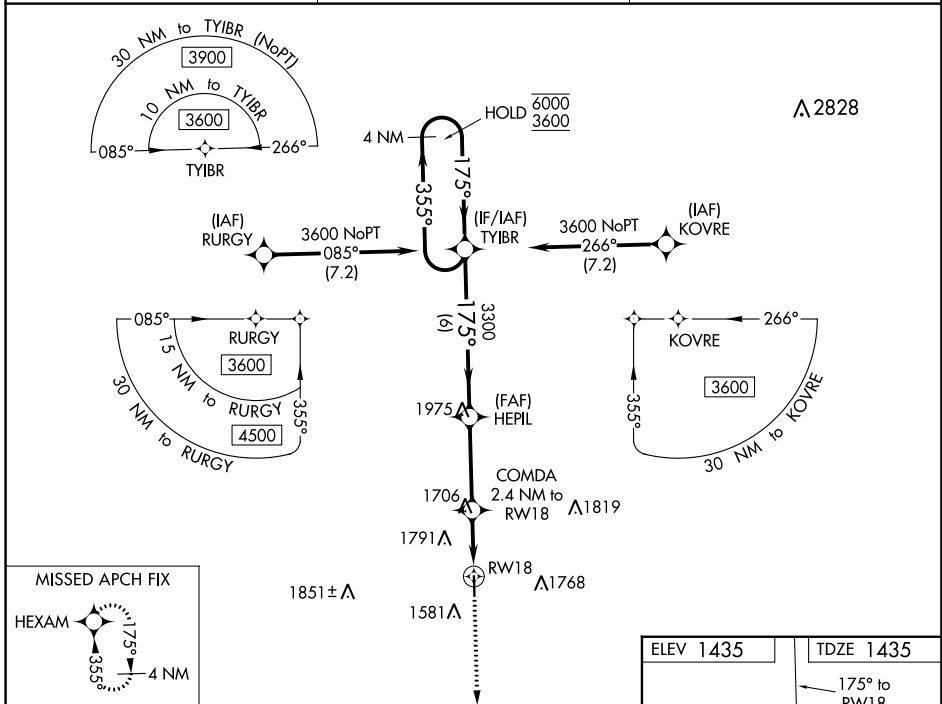
WAAS CH <b>86317</b> W18A	APP CRS <b>175°</b>	Rwy Idg TDZE Apt Elev	<b>4200</b> <b>1435</b> <b>1435</b>
---------------------------------	------------------------	-----------------------------	---

# RNAV (GPS) RWY 18

QUENTIN AANENSON FLD (L.Y.V)

RNP APCH-GPS.	MISSED APPROACH: Climb to 3200 direct HEXAM and hold.
▼ For uncompensated Baro-VNAV systems, LNAV/VNAV ▲ NA below -17°C or above 54°C.	

AWOS-3 <b>119.825</b>	SIOUX FALLS APP CON * <b>125.8 284.725</b>	UNICOM <b>122.7(CTAF) 0</b>
--------------------------	---	--------------------------------



CATEGORY	A	B	C	D
LPV DA	1635-1		200 (200-1)	
LNAV/VNAV DA	1847-1½		412 (500-1½)	
LNAV MDA	1960-1	525 (600-1)	1960-1½	525 (600-1½)
CIRCLING	1960-1 525 (600-1)	2160-1 725 (800-1)	2360-2¾ 925 (1000-2¾)	2360-3 925 (1000-3)

MIRL Rwy 18-36 0  
REIL Rwy 18 and 36 0

NC-1, 16 MAY 2024 to 13 JUN 2024

NC-1, 16 MAY 2024 to 13 JUN 2024