

RNAV (GPS) Y RWY 18

PICAYUNE MUNI (MJD)

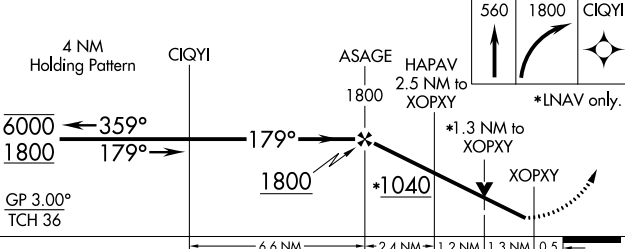
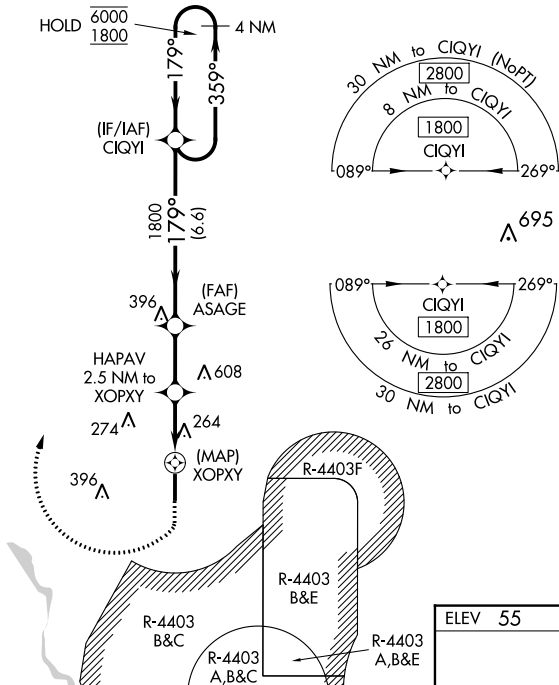
WAAS CH 42938 W18A	APP CRS 179°	Rwy Idg 5000 TDZE 55 Apt Elev 55
--	------------------------	---

RNP APCH.

⚠ Baro-VNAV and VDP NA when using Stennis Intl altimeter setting. Rwy 18 helicopter visibility reduction below 3/4 SM NA. For uncompensated Baro-VNAV systems, LNAV/VNAV NA below -15°C or above 5°C. When local altimeter setting not received, use Stennis Intl altimeter setting: increase LPV DA to 377 and visibility all Cats 1/8 mile; increase LNAV/VNAV DA to 621 and visibility all Cats 1/8 mile; increase all MDA 40 feet. Procedure NA when R-4403 B/C/E is active.

MISSED APPROACH: (Do not exceed 185K) Climb to 560 then climbing right turn to 1800 direct CIQYI and hold.

AWOS-3PT 119.075	GULFPORT APP CON * 124.6 354.1	UNICOM 122.8 (CTAF) 0
----------------------------	--	---------------------------------



ELEV 55	TDZE 55
---------	---------

MIRL Rwy 18-36 0

CATEGORY	A	B	C	D
LPV DA	343-1		288 (300-1)	
LNAV/VNAV DA	587-1 7/8		532 (600-1 7/8)	
LNAV MDA	520-1	465 (500-1)	520-1 3/8	465 (500-1 3/8)
C CIRCLING	520-1 465 (500-1)	580-1 525 (600-1)	NA	

SC-4, 16 MAY 2024 to 13 JUN 2024

SC-4, 16 MAY 2024 to 13 JUN 2024