

APP CRS <b>009°</b>	Rwy Idg TDZE Apt Elev	<b>N/A</b> <b>N/A</b> <b>4044</b>
------------------------	-----------------------------	---

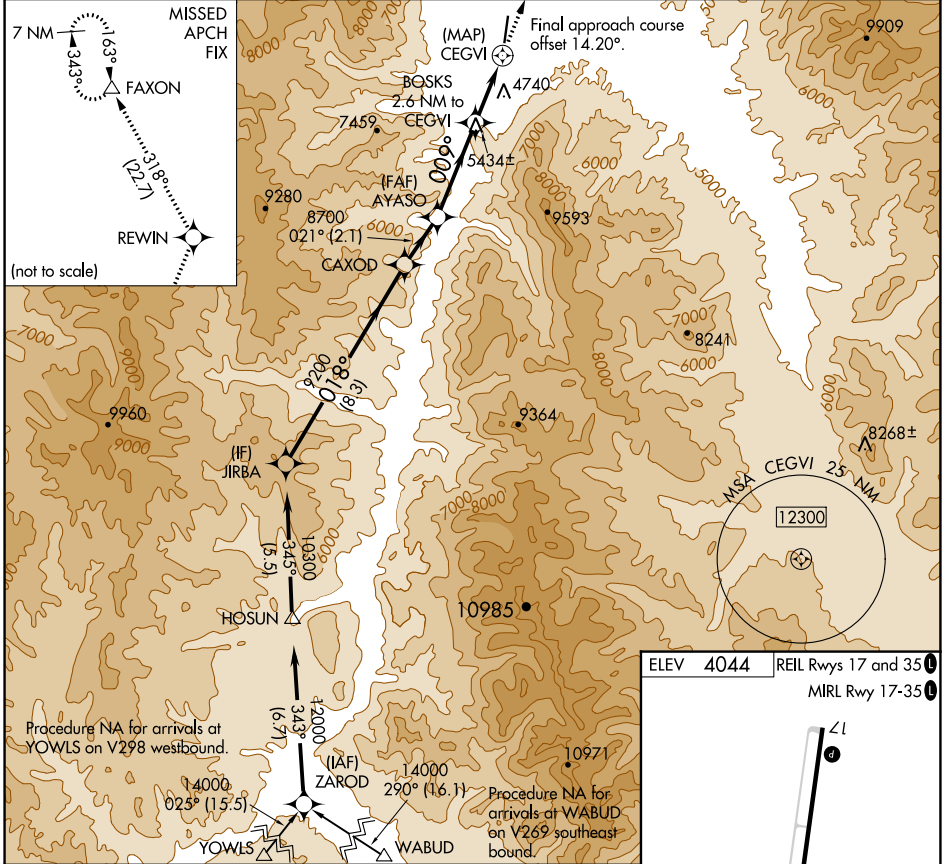
# RNAV (GPS)-D

LEMHI COUNTY (SMN)

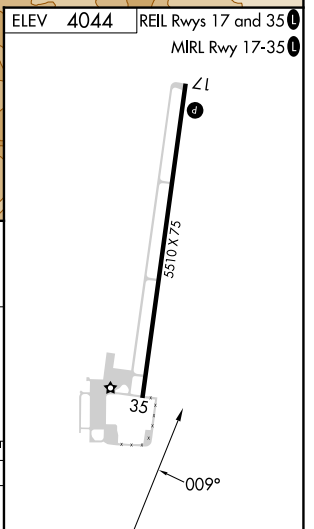
**⚠** Circling Rwy 35 NA at night.  
**⚠** NA DME/DME RNP-0.3 NA.  
**⚠** -13°C Circling NA for Cat C east of Rwy 17-35.

MISSED APPROACH: Climb to 12000 direct REWIN and on track 318° to FAXON and hold, continue climb-in-hold to 12000.

AWOS-3PT <b>135.075</b>	SALT LAKE CENTER <b>132.4 338.3</b>	UNICOM <b>122.8 (CTAF) 0</b>
----------------------------	--	---------------------------------



JIRBA	CAXOD	AYASO	BOSKS	REWIN	FAXON
10300	9200	8700	2.6 NM to CEGVI	tr 318°	△
10300	9200	8700	7020	CEGVI	
8.3 NM	2.1 NM	3.6 NM	2.6 NM	0.5	
018°	021°	009°	8.91°		
			TCH 40		
CATEGORY	A	B	C	D	
<b>C</b> CIRCLING	6000-1¼ 1956 (2000-1¼)	6000-1½ 1956 (2000-1½)	6220-3 2176 (2200-3)	NA	



NW-1, 16 MAY 2024 to 13 JUN 2024

NW-1, 16 MAY 2024 to 13 JUN 2024