

WAAS CH <b>60912</b> <b>W35A</b>	APP CRS <b>347°</b>	Rwy Idg TDZE Apt Elev	<b>8500</b> <b>194</b> <b>194</b>
--	------------------------	-----------------------------	---

# RNAV (GPS) RWY 35

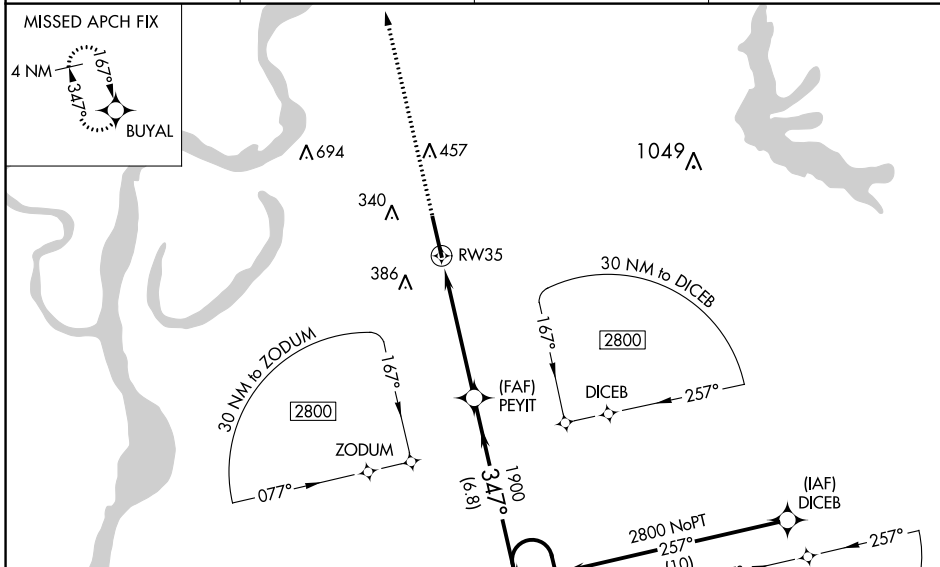
TUNICA MUNI (UTA)

⚠ For uncompensated Baro-VNAV systems, LNAV/VNAV NA below -15°C (5°F) or above 42°C (107°F). For inop MALS, increase LNAV/VNAV all Cats visibility to ¾ mile.  
⚠ DME/DME RNP-0.3 NA. Baro-VNAV and VDP NA when using Memphis altimeter setting.  
 When local altimeter setting not received, use Memphis altimeter setting and increase LPV DA to 480, LNAV/VNAV DA to 530, and all MDA 100 feet; increase LNAV/VNAV visibility all Cats ½ mile, increase LNAV Cat C, D and Circling Cat C visibility ¼ mile. For inop MALS when using Memphis altimeter setting, increase LPV all Cats visibility to ¾ mile.

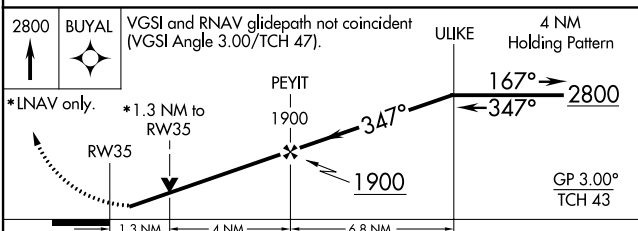
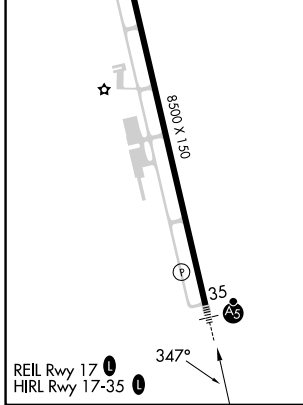


**MISSED APPROACH:**  
Climb to 2800 direct BUYAL and hold.

AWOS-3 <b>118.075</b>	MEMPHIS APP CON <b>119.1 291.6</b>	CINC DEL <b>118.9</b>	UNICOM <b>123.0 (CTAF) 0</b>
--------------------------	---------------------------------------	--------------------------	---------------------------------



ELEV	194	TDZE	194
------	-----	------	-----



CATEGORY	A	B	C	D
LPV DA	394-½ 200 (200-½)			
LNAV/VNAV DA	444-½ 250 (300-½)			
LNAV MDA	640-½	446 (500-½)	640-7/8	446 (500-7/8)
CIRCLING	680-1	740-1	760-1½	760-2
	486 (500-1)	546 (600-1)	566 (600-1½)	566 (600-2)

SC-4, 16 MAY 2024 to 13 JUN 2024

SC-4, 16 MAY 2024 to 13 JUN 2024