

| | | |
|-------------|----------|-------------|
| APP CRS | Rwy Idg | 4498 |
| 065° | TDZE | 2240 |
| | Apt Elev | 2241 |

RNAV (GPS) RWY 6

JOHNSON COUNTY (6A.4)

RNP APCH.

NA
 Circling NA for Cat C southeast of Rwy 6-24. Procedure NA at night. Rwy 6 helicopter visibility reduction below 1 SM NA. When local altimeter setting not received, use Abingdon altimeter setting and increase all MDA 80 feet. Circling NA for Cat B and C when using Abingdon altimeter setting.

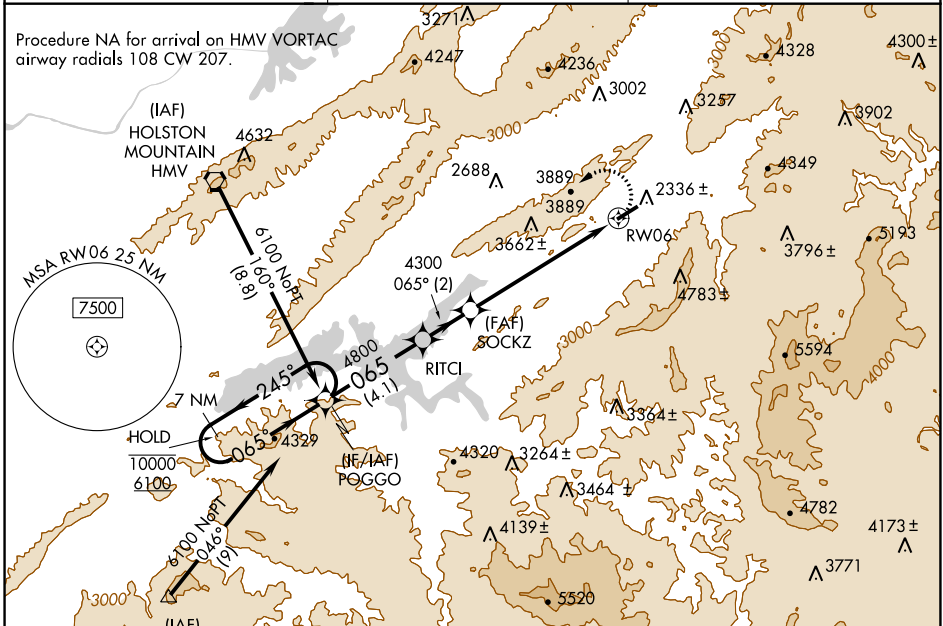
MISSED APPROACH:
 Climbing left turn to 6100 direct POGGO and hold.

AWOS-3
126.225

TRI-CITY APP CON ★
134.425 349.0

UNICOM
122.7 (CTAF)

Procedure NA for arrival on HVM VORTAC airway radials 108 CW 207.

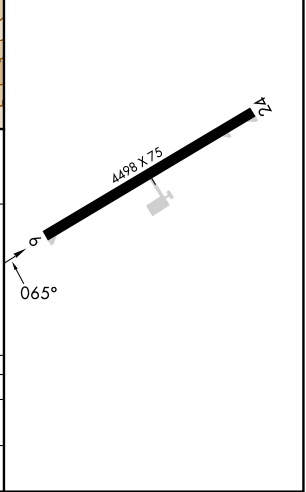


SE-1, 16 MAY 2024 to 13 JUN 2024

SE-1, 16 MAY 2024 to 13 JUN 2024

| | |
|-----------|-----------|
| ELEV 2241 | TDZE 2240 |
|-----------|-----------|

| | | | |
|----------------------|-------------|-----------------------------|------------|
| 7 NM Holding Pattern | POGGO | Visual Segment - Obstacles. | 6100 POGGO |
| 10000 ← 245° | 6100 → 065° | RITCI | SOCKZ |
| | | 4800 | RWY 06 |
| | | 4300 | |
| | | 4.1 NM | 2 NM |
| | | | 6.2 NM |



| CATEGORY | A | B | C | D |
|----------|---------------------------|---------------------------|-------------------------|----|
| RNAV MDA | 4040-1¼ 1800 (1800-1¼) | 4040-1½ 1800 (1800-1½) | 4040-3 1800 (1800-3) | |
| CIRCLING | 4040-1¼ 1799 (1800-1¼) | 4260-1½ 2019 (2100-1½) | 4280-3 2039 (2100-3) | NA |