

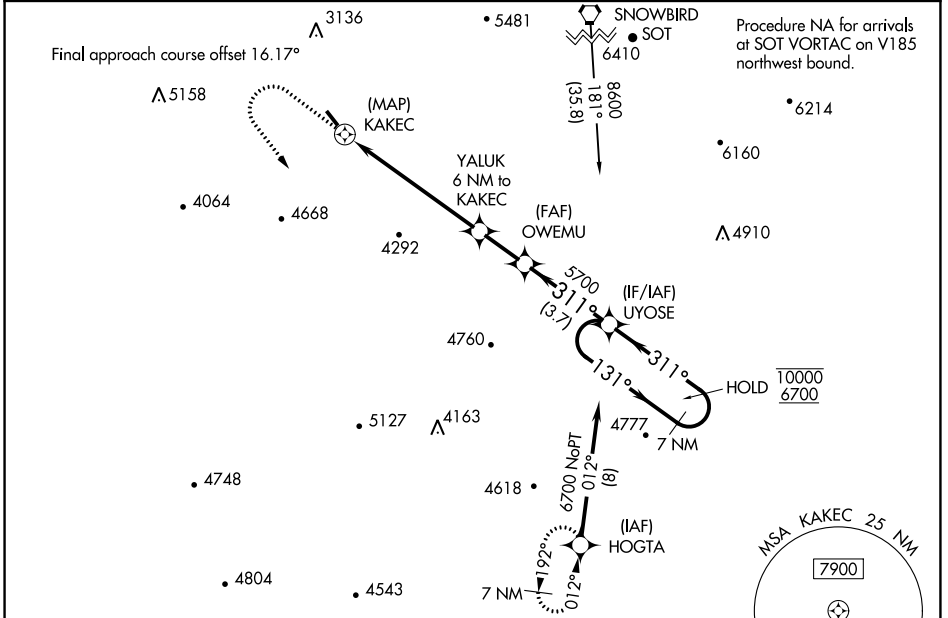
APP CRS	Rwy Idg	<b>3060</b>
<b>311°</b>	TDZE	<b>2807</b>
	Apt Elev	<b>2857</b>

# RNAV (GPS) RWY 33

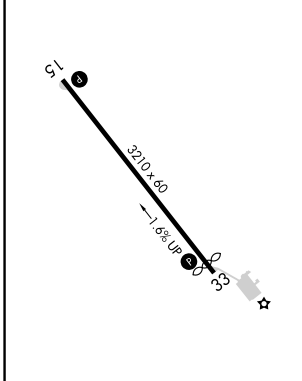
JACKSON COUNTY (24A)

RNP APCH.	MISSED APPROACH: Climb to 5000 then climbing left turn to 8000 direct HOGTA and hold.
▼ Procedure NA at night.	
▲ Rwy 33 helicopter visibility reduction below 1 SM NA.	
☁ -14°C	

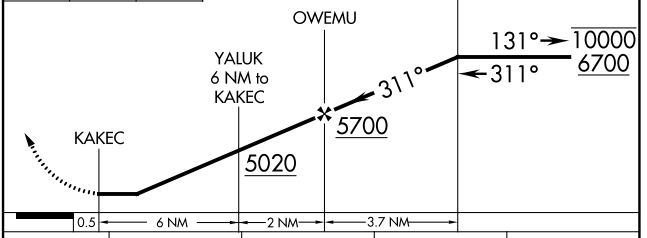
AWOS-3PT <b>118.9</b>	ATLANTA CENTER <b>134.8 379.95</b>	UNICOM <b>123.0 (CTAF) 0</b>
--------------------------	---------------------------------------	---------------------------------



ELEV 2857	TDZE 2807
-----------	-----------



5000	8000	HOGTA	Visual segment - Obstacles.
↑	↪	✦	



CATEGORY	A	B	C	D
LNAV MDA	4360-1¼ 1553 (1600-1¼)	4360-1½ 1553 (1600-1½)		NA
CIRCLING	4360-1¼ 1503 (1600-1¼)	4520-1½ 1663 (1700-1½)		NA

REIL Rwy 15  
REIL Rwy 33 0  
MIRL Rwy 15-33 0

SE-2, 16 MAY 2024 to 13 JUN 2024

SE-2, 16 MAY 2024 to 13 JUN 2024