

(HANIM2.HANIM) 22363

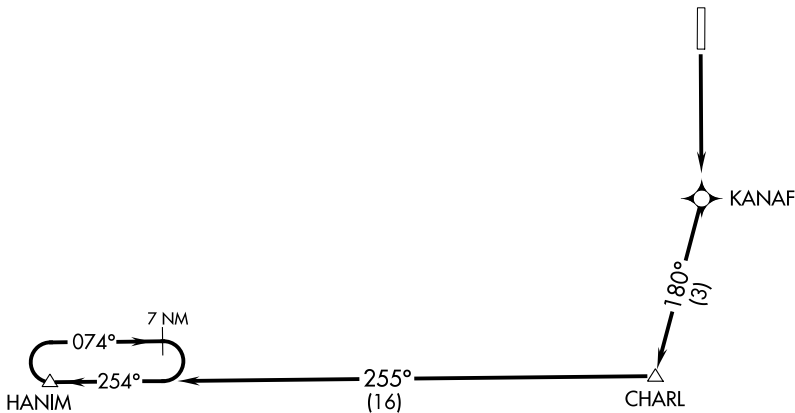
HANIM TWO DEPARTURE (RNAV)

AL-9978 (FAA)

RONAN (7S)
RONAN, MONTANA

SALT LAKE CITY CENTER
127.075 244.875
CTAF
122.8

TOP ALTITUDE:
13000



NOTE: RNAV 1.
NOTE: GPS required.

TAKEOFF MINIMUMS

Rwy 16: Standard.
Rwy 34: NA. See RONAN DEPARTURE.

NOTE: Chart not to scale



DEPARTURE ROUTE DESCRIPTION

TAKEOFF RUNWAY 16: Climb to 13000 direct KANAF and via track 180° to CHARL and via track 255° to HANIM and hold, continue climb-in-hold to 13000 before proceeding on course.

HANIM TWO DEPARTURE (RNAV)

(HANIM2.HANIM) 21JUL16

RONAN, MONTANA
RONAN (7S)

NW-1, 16 MAY 2024 to 13 JUN 2024

NW-1, 16 MAY 2024 to 13 JUN 2024