

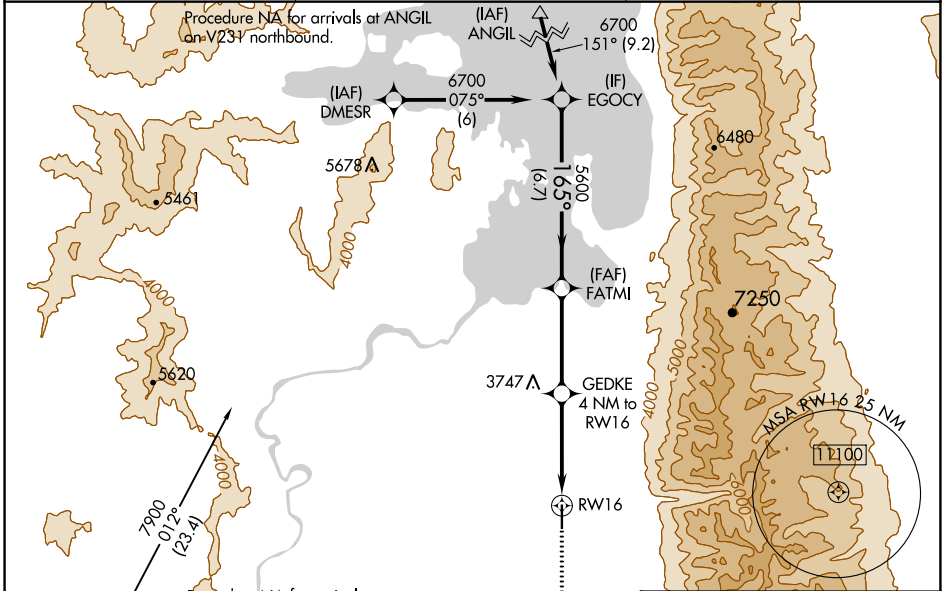
WAAS CH <b>45814</b> <b>W16A</b>	APP CRS <b>165°</b>	Rwy Idg <b>4798</b> TDZE <b>3086</b> Apt Elev <b>3086</b>
--	------------------------	---

# RNAV (GPS) RWY 16

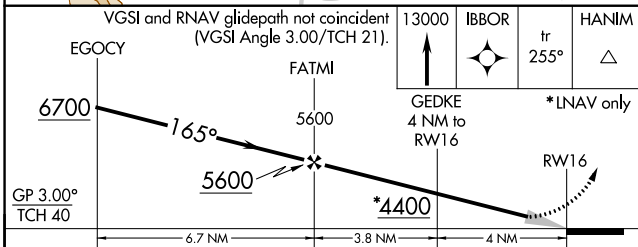
RONAN (7S0)

RNP APCH.	<p><b>NA</b> Baro-VNAV NA when using Missoula altimeter setting. For uncompensated Baro-VNAV systems, procedure NA below -21°C or above 54°C. Circling NA east of Rwy 16-34. When local altimeter setting not received, use Missoula altimeter setting: increase LPV DA to 3550 and LNAV/VNAV DA to 3639 and all visibilities ¼ SM; increase all MDAs 120 feet and LNAV Cat B and Circling Cats A and B visibility ¼ SM.</p>	<p><b>MISSED APPROACH:</b> Climb to 13000 direct IBBOR and on track 255° to HANIM and hold, continue climb-in-hold to 13000.</p>
-----------	--	--

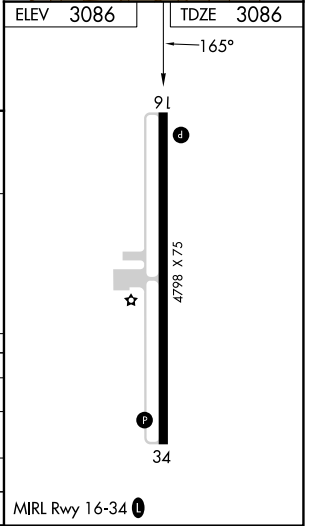
AWOS-2 <b>119.925</b>	SALT LAKE CITY CENTER <b>127.075 244.875</b>	AUNICOM <b>122.8 (CTAF)</b>
--------------------------	---	--------------------------------



ELEV 3086	TDZE 3086
-----------	-----------



CATEGORY	A	B	C	D
LPV DA	3443-1¼	357 (400-1¼)		NA
LNAV/VNAV DA	3532-1¾	446 (500-1¾)		NA
LNAV MDA	3800-1	714 (800-1)		NA
<b>CIRCLING</b>	3800-1	714 (800-1)		NA



NW-1, 16 MAY 2024 to 13 JUN 2024

NW-1, 16 MAY 2024 to 13 JUN 2024