

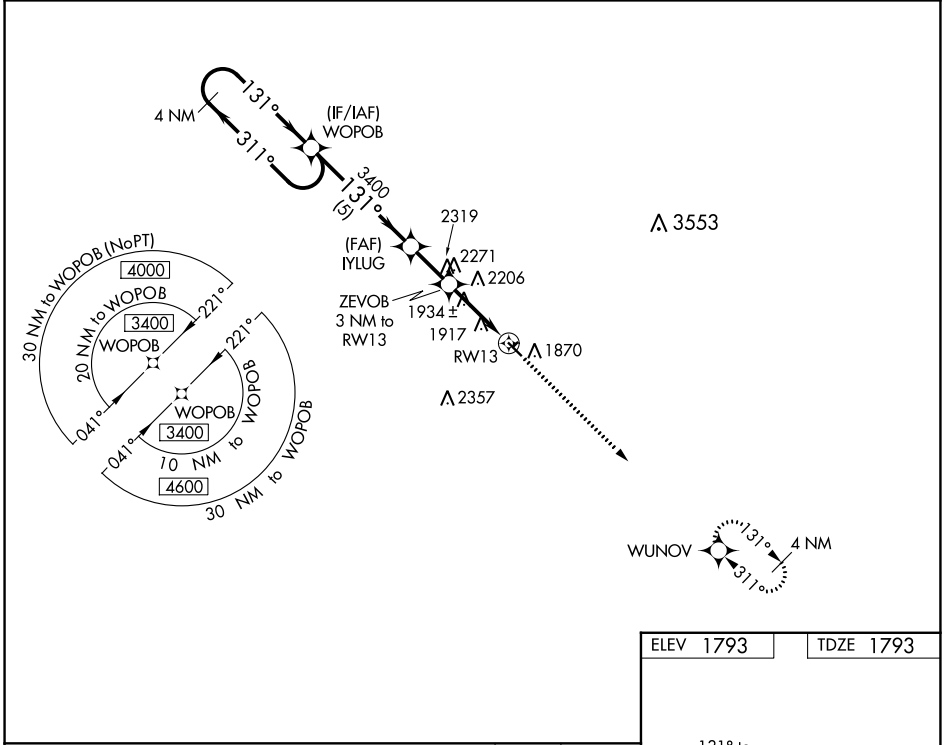
WAAS CH <b>58340</b> <b>W13A</b>	APP CRS <b>131°</b>	Rwy Idg TDZE Apt Elev	<b>3697</b> <b>1793</b> <b>1793</b>
--	------------------------	-----------------------------	---

# RNAV (GPS) RWY 13

CLARK COUNTY (8D7)

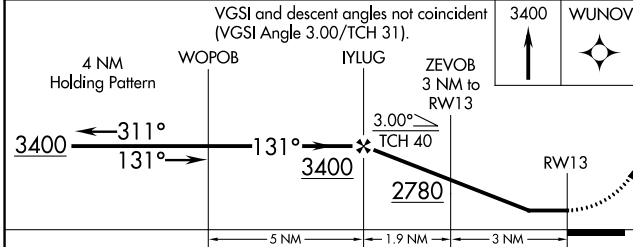
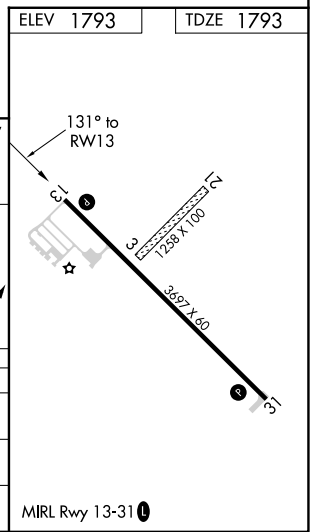
RNP APCH.	MISSED APPROACH: Climb to 3400 direct WUNOV and hold.
<p><b>▼</b> Rwy 13 helicopter visibility reduction below 3/4 SM NA. Use Watertown altimeter setting. Circling NA to Rwys 3 and 21.</p> <p><b>▲</b> NA</p>	

<p>ATY ASOS <b>126.625</b></p>	<p>MINNEAPOLIS CENTER <b>128.5 306.2</b></p>	<p>UNICOM <b>122.8 (CTAF) 0</b></p>
------------------------------------	--	---



NC-1, 16 MAY 2024 to 13 JUN 2024

NC-1, 16 MAY 2024 to 13 JUN 2024



		5 NM	1.9 NM	3 NM	
CATEGORY	A	B	C	D	
LP MDA	2260-1	467 (500-1)		NA	
LNAV MDA	2400-1	607 (700-1)		NA	
<b>C</b> CIRCLING	2400-1	607 (700-1)		NA	