

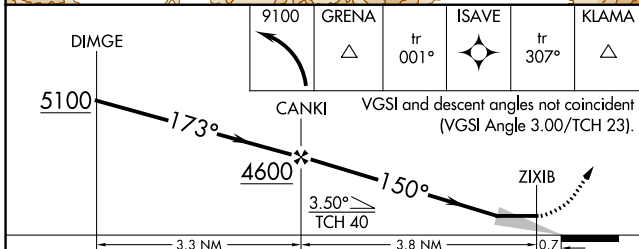
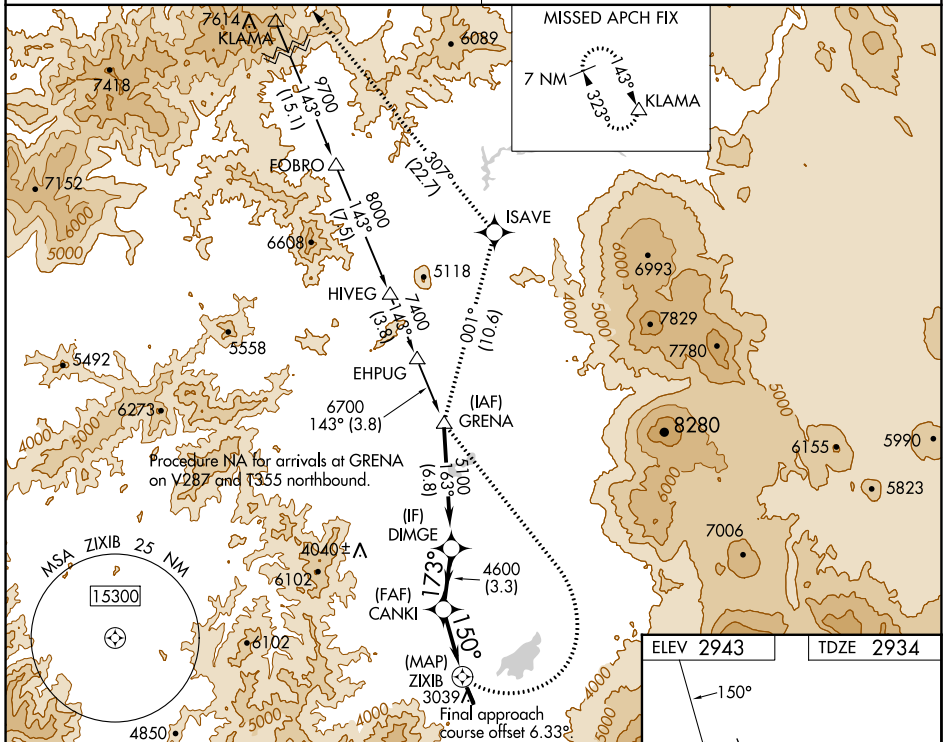
APP CRS	Rwy Idg	<b>5000</b>
<b>150°</b>	TDZE	<b>2934</b>
	Apt Elev	<b>2943</b>

# RNAV (GPS) RWY 14

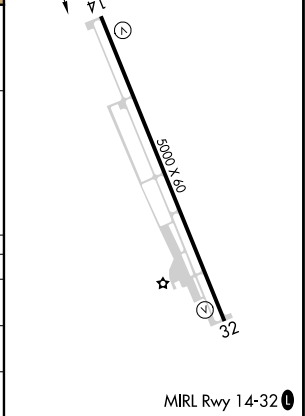
WEED (O46)

RNP APCH - GPS.	MISSED APPROACH: (Do not exceed 185K until GRENA) Climbing left turn to 9100 direct GRENA then on track 001° to ISAVE then on track 307° to KLAMA and hold.
<p>⚠ Circling NA southwest of Rwy 14-32.</p> <p>⚠ NA Use Montague altimeter setting.</p>	*Missed approach requires minimum climb of 325 feet per NM to 4000.

SEATTLE CENTER <b>124.85 306.3</b>	UNICOM <b>122.7 (CTAF)</b>
---------------------------------------	-------------------------------



ELEV 2943	TDZE 2934
-----------	-----------



CATEGORY	A	B	C	D
LNAV MDA*	3440-1	506 (500-1)	3580-1 $\frac{7}{8}$ 646 (700-1 $\frac{7}{8}$ )	3700-2 $\frac{1}{2}$ 766 (800-2 $\frac{1}{2}$ )
LNAV MDA	3440-1 506 (500-1)	3480-1 546 (600-1)	3780-2 $\frac{1}{2}$ 846 (900-2 $\frac{1}{2}$ )	3820-2 $\frac{1}{2}$ 886 (900-2 $\frac{1}{2}$ )
CIRCLING	3680-1 737 (800-1)	3840-1 $\frac{1}{4}$ 897 (900-1 $\frac{1}{4}$ )	4220-3 1277 (1300-3)	4440-3 1497 (1500-3)

SW-2, 16 MAY 2024 to 13 JUN 2024

SW-2, 16 MAY 2024 to 13 JUN 2024