

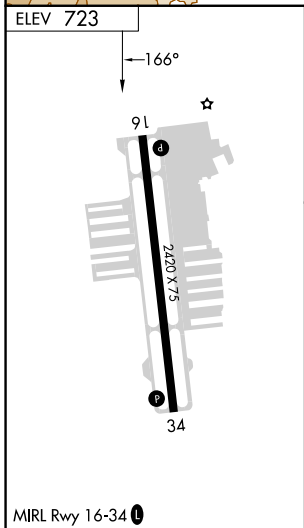
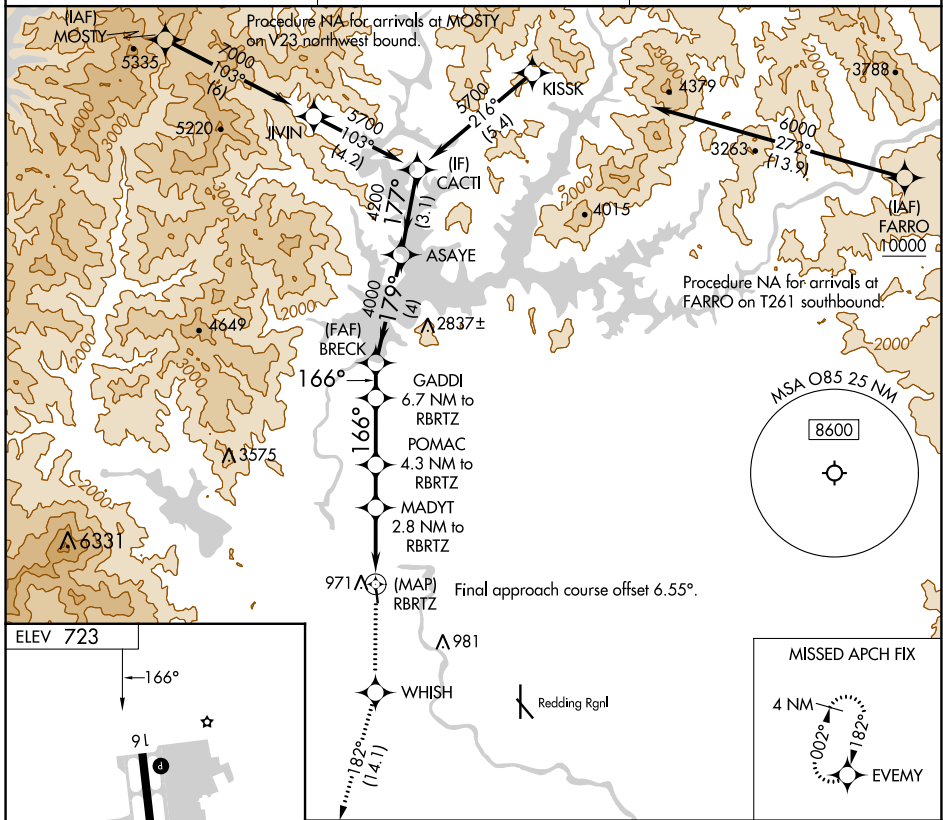
APP CRS	Rwy Idg	N/A
166°	TDZE	N/A
	Apt Elev	723

RNAV (GPS)-A

BENTON FLD (O85)

RNP APCH - GPS.	MISSED APPROACH: Climb to 4000 direct WHISH and on track 182° to EVMY and hold.
<p>Procedure NA at night. Rwy 16, 34 helicopter visibility reduction below 1 SM NA. When local altimeter setting not received, use Redding Rgnl altimeter setting and increase all MDAs 60 feet.</p>	

AWOS-2 118.675	OAKLAND CENTER 132.2 350.3	UNICOM 122.8 (CTAF) 0
--------------------------	--------------------------------------	---------------------------------



4000	WHISH	EVMY	VGSI and descent angles not coincident (VGSI Angle 3.50/TCH 24).		CACTI
↑	182°	182°	GADDI 6.7 NM to RBRTZ	BRECK	ASAYE
			POMAC 4.3 NM to RBRTZ	4000	5700
			MADYT 2.8 NM to RBRTZ	3500	4200
			RBRTZ	1960	
			2560		
			3.70°	179°	177°
			TCH 60		
			166°		
			2.8 NM	1.5 NM	2.4 NM
			1.3 NM	4 NM	3.1 NM
CATEGORY	A	B	C	D	
CIRCLING	1340-1 617 (700-1)	1600-1¼ 877 (900-1¼)	NA		

SW-2, 16 MAY 2024 to 13 JUN 2024

SW-2, 16 MAY 2024 to 13 JUN 2024