

(SLENA1.SLENA) 24025

AL-10309 (FAA)

BOERNE STAGE AIRFIELD (5C1)  
SAN ANTONIO, TEXAS

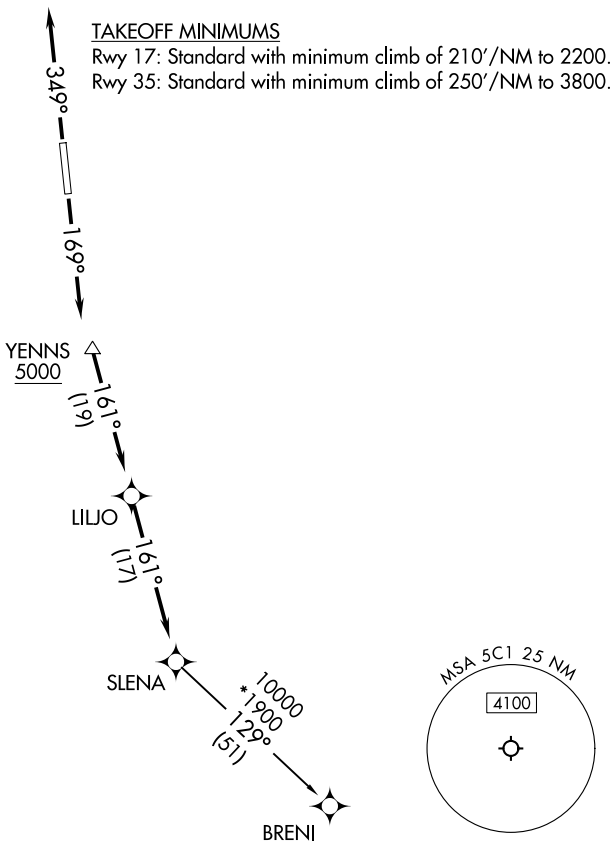
# SLENA ONE DEPARTURE (RNAV)

SAN ANTONIO DEP CON  
125.1 307.0

RNAV 1 - DME/DME IRU or GPS.

RADAR required.

**TOP ALTITUDE:  
ASSIGNED BY ATC**



NOTE: Chart not to scale.



## DEPARTURE ROUTE DESCRIPTION

TAKEOFF RUNWAY 17: Climb on heading 169° or as assigned by ATC, for vectors to YENNS, thence . . . .

TAKEOFF RUNWAY 35: Climb on heading 349° or as assigned by ATC, for vectors to YENNS, thence . . . .

. . . . on track 161° to LILJO, then on track 161° to SLENA, then on transition.  
Maintain ATC assigned altitude.

BRENI TRANSITION (SLENA1.BRENI)

**SLENA ONE DEPARTURE (RNAV)**  
(SLENA1.SLENA) 25JAN24

SAN ANTONIO, TEXAS  
BOERNE STAGE AIRFIELD (5C1)

SC-3, 16 MAY 2024 to 13 JUN 2024

SC-3, 16 MAY 2024 to 13 JUN 2024