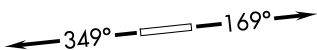
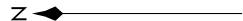


SC-3, 16 MAY 2024 to 13 JUN 2024

SAN ANTONIO DEP CON  
125.1 307.0



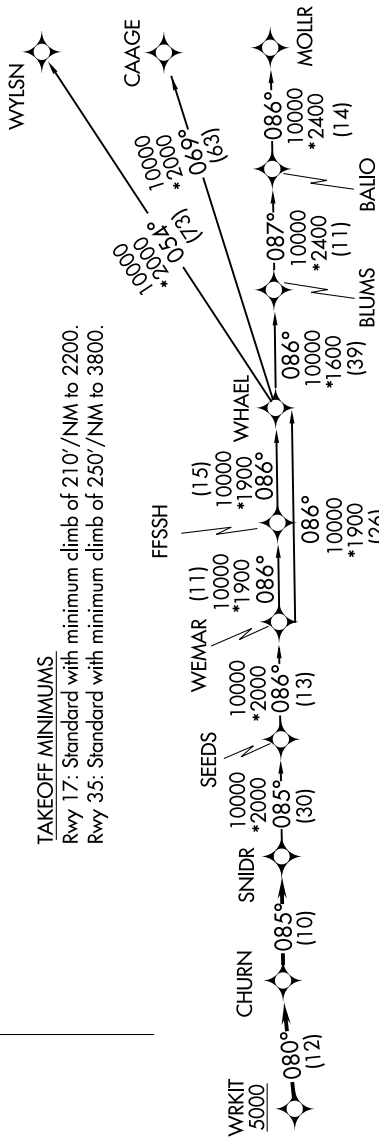
RNAV 1 - DME/DME IRU or GPS.  
RADAR required.

TOP ALTITUDE:  
ASSIGNED BY ATC

**TAKEOFF MINIMUMS**

Rwy 17: Standard with minimum climb of 210'/NM to 2200.

Rwy 35: Standard with minimum climb of 250'/NM to 3800.



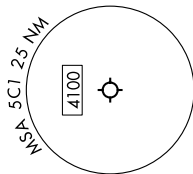
**DEPARTURE ROUTE DESCRIPTION**

**TAKEOFF RUNWAY 17:** Climb on heading 169° or as assigned by ATC, for vectors to WRKIT, thence . . . .

**TAKEOFF RUNWAY 35:** Climb on heading 349° or as assigned by ATC, for vectors to WRKIT, thence . . . .

. . . . on track 080° to CHURN, then on track 085° to SNIDR, then on transition. Maintain ATC assigned altitude.

- BLUMS TRANSITION (SNIDR1.BLUMS)
- CAAGE TRANSITION (SNIDR1.CAAGE)
- FFSSH TRANSITION (SNIDR1.FFSSH)
- MOLLR TRANSITION (SNIDR1.MOLLR)
- SEEDS TRANSITION (SNIDR1.SEEDS)
- WEMAR TRANSITION (SNIDR1.WEMAR)
- WHAEL TRANSITION (SNIDR1.WHAEL)
- WYLSN TRANSITION (SNIDR1.WYLSN)



Note: Chart not to scale.

SC-3, 16 MAY 2024 to 13 JUN 2024