

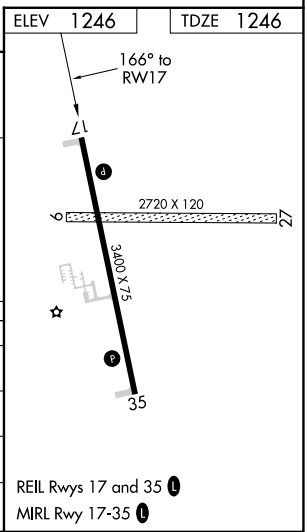
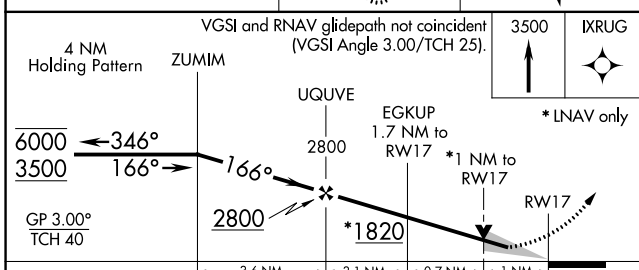
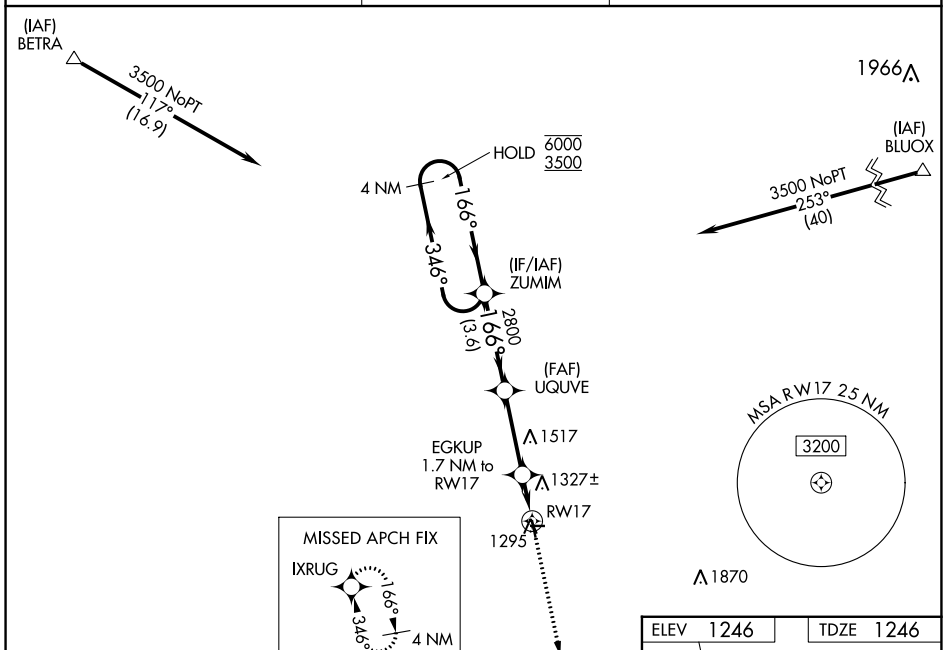
WAAS CH 45832 W17A	APP CRS 166°	Rwy Idg TDZE 1246 Apt Elev 1246
--	------------------------	---

RNAV (GPS) RWY 17

MAHNOMEN COUNTY (3N8)

RNP APCH.	<p>⚠ Circling NA to Rwy 9 and 27. Baro-VNAV and VDP NA when using Fosston altimeter setting. For uncompensated Baro-VNAV systems, LNAV/VNAV NA below -17°C or above 54°C. When local altimeter setting not received, use Fosston altimeter setting and increase all DA to 1549 feet; increase all MDA 60 feet.</p>	<p>MISSED APPROACH: Climb to 3500 direct IXRUG and hold.</p>
-----------	---	--

AWOS-3PT 121.125	MINNEAPOLIS CENTER 127.35 278.3	CTAF 122.9
----------------------------	---	----------------------



CATEGORY	A	B	C	D
LPV DA	1496-1	250 (300-1)		NA
LNAV/VNAV DA	1496-1	250 (300-1)		NA
LNAV MDA	1580-1	334 (400-1)		NA
C CIRCLING	1640-1 394 (400-1)	1700-1 454 (500-1)		NA

NC-1, 16 MAY 2024 to 13 JUN 2024

NC-1, 16 MAY 2024 to 13 JUN 2024