

APP CRS	Rwy Idg	N/A
347°	TDZE	N/A
	Apt Elev	4693

RNAV (GPS)-A

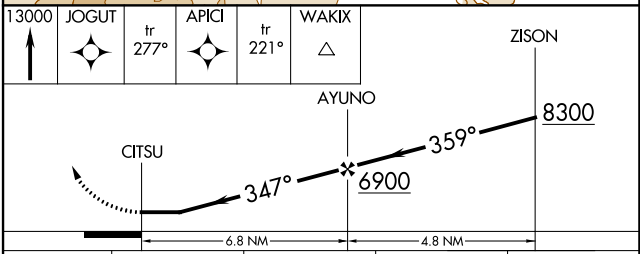
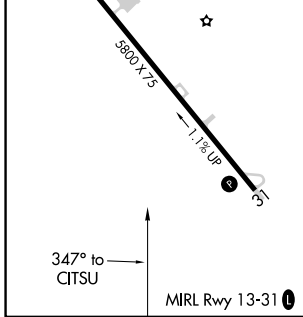
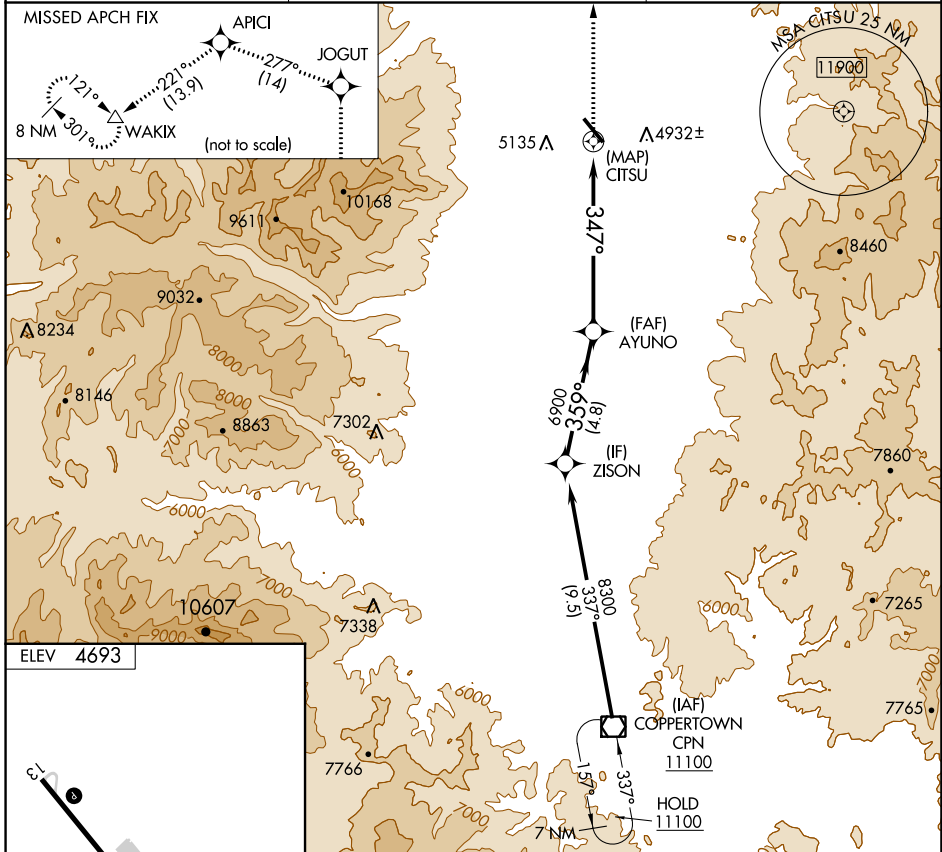
DEER LODGE-CITY-COUNTY (38S)

NA Circling Rwy 13 NA at night. DME/DME RNP-0.3 NA. Rwy 13 helicopter visibility reduction below 1 SM NA. When local altimeter setting not received use Anaconda altimeter setting and increase all MDA 100 feet; increase Cat B visibility 1/4 SM.

-23°C

MISSED APPROACH: Climb to 13000 direct JOGUT and on track 277° to APICI and on track 221° to WAKIX and hold, continue climb-in-hold to 13000.

AWOS-AV 120.025	SALT LAKE CENTER 133.4 285.4	CTAF 122.90
---------------------------	--	-----------------------



CATEGORY	A	B	C	D
CIRCLING	5440-1 747 (800-1)	5460-1 767 (800-1)	5720-3 1027 (1100-3)	6300-3 1607 (1700-3)

NW-1, 16 MAY 2024 to 13 JUN 2024

NW-1, 16 MAY 2024 to 13 JUN 2024