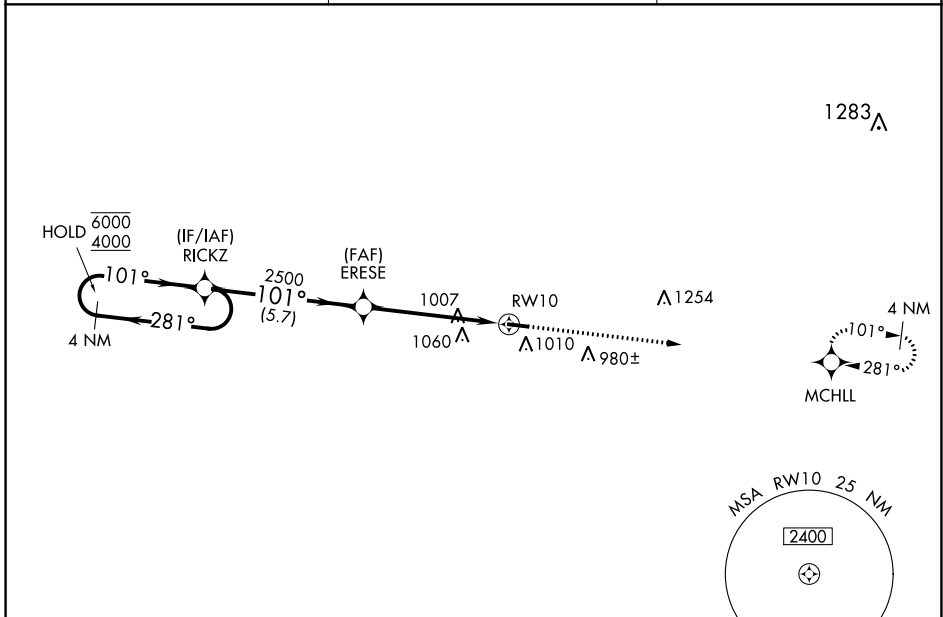


WAAS CH 90442 W10A	APP CRS 101°	Rwy Idg TDZE Apt Elev	4000 728 732
--	------------------------	-----------------------------	---

RNAV (GPS) RWY 10

BRECKINRIDGE COUNTY (I93)

RNP APCH.		MISSED APPROACH: Climb to 4000 direct MCHLL and hold, continue climb-in-hold to 4000.
Rwy 10 helicopter visibility reduction below 3/4 SM NA. Baro-VNAV NA. Use Fort Knox altimeter setting, when not received, use Elizabethtown altimeter setting and increase LPV DA to 1043, LNAV/VNAV DA to 1191 and all MDA 20 feet.		
KFTK ATIS ★ 109.6	LOUISVILLE APP CON 132.075 327.0	CTAF 122.9 0

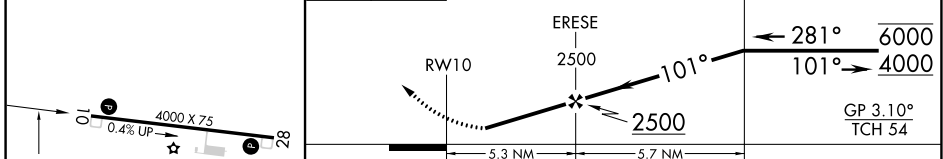


SE-1, 16 MAY 2024 to 13 JUN 2024

SE-1, 16 MAY 2024 to 13 JUN 2024

ELEV 732	TDZE 728
----------	----------

4000	MCHLL	VGSI and RNAV glidepath not coincident (VGSI Angle 3.10/TCH 34).	4 NM Holding Pattern
------	-------	--	----------------------



CATEGORY	A	B	C	D
LPV DA		1036-1	308 (400-1)	
LNAV/VNAV DA		1184-1 3/8	456 (500-1 3/8)	
LNAV MDA	1380-1	652 (700-1)	1380-1 7/8	652 (700-1 7/8)
CIRCLING	1380-1 648 (700-1)	1480-1 748 (800-1)	1480-2 1/4 748 (800-2 1/4)	1480-2 1/2 748 (800-2 1/2)

MIRL Rwy 10-28
REIL Rwy 10 and 28