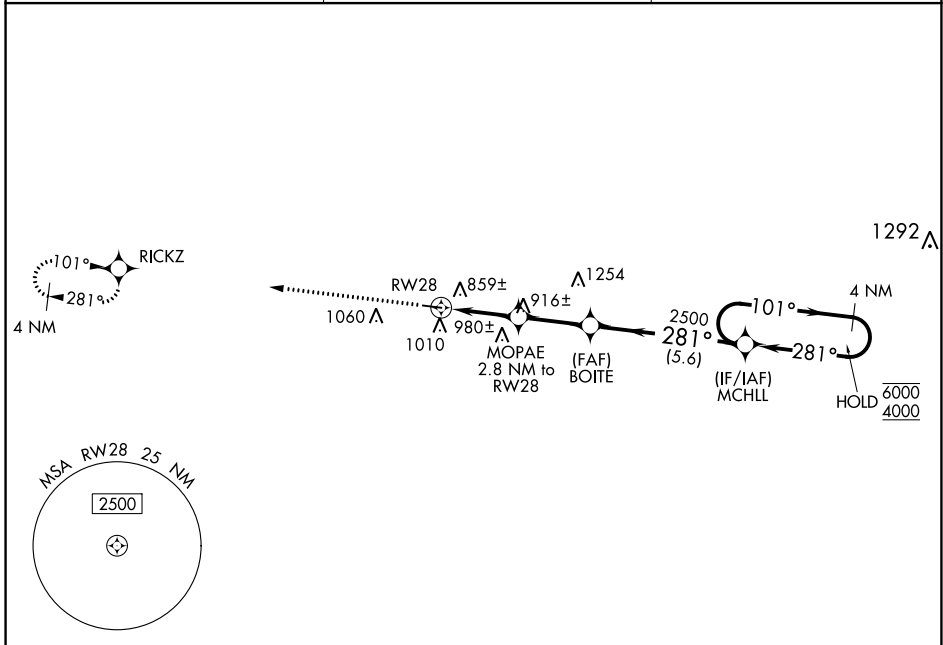


WAAS CH 77842 W28A	APP CRS 281°	Rwy Idg TDZE Apt Elev	4000 732 732
--	------------------------	-----------------------------	---

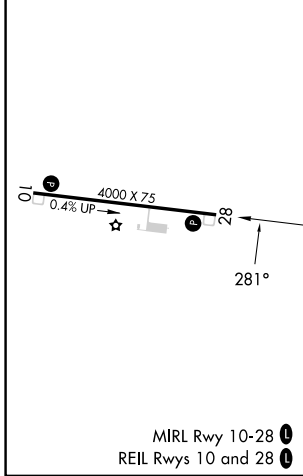
RNAV (GPS) RWY 28

BRECKINRIDGE COUNTY (I93)

RNP APCH.		MISSED APPROACH: Climb to 4000 direct RICKZ and hold, continue climb-in-hold to 4000.
<p>▽ Baro-VNAV NA. Use Fort Knox altimeter setting, when not received, use Elizabethtown altimeter setting and increase LPV DA to 1047, LNAV/VNAV DA to 1185 and all MDA 20 feet.</p> <p>△ NA</p>		
KFTK ATIS ★ 109.6	LOUISVILLE APP CON 132.075 327.0	CTAF 122.9 0



ELEV 732	TDZE 732
----------	----------



4000	RICKZ	VGSI and RNAV glidepath not coincident (VGSI Angle 3.00°/TCH 27°).	4 NM Holding Pattern	
*LNAV only.		BOITE 2500	MCHLL	
MOPAE 2.8 NM to RWY 28		1660*	2500	
2.8 NM		2.6 NM	5.6 NM	
CATEGORY	A	B	C	D
LPV DA		1040-1	308 (400-1)	
LNAV/VNAV DA		1178-1 ³ / ₈	446 (500-1 ³ / ₈)	
LNAV MDA	1180-1	448 (500-1)	1180-1 ³ / ₈	448 (500-1 ³ / ₈)
<input checked="" type="checkbox"/> CIRCLING	1380-1 648 (700-1)	1480-1 748 (800-1)	1480-2 ¹ / ₄ 748 (800-2 ¹ / ₄)	1480-2 ¹ / ₂ 748 (800-2 ¹ / ₂)

SE-1, 16 MAY 2024 to 13 JUN 2024

SE-1, 16 MAY 2024 to 13 JUN 2024