

APP CRS	Rwy Idg	3849
045°	TDZE	281
	Apt Elev	288

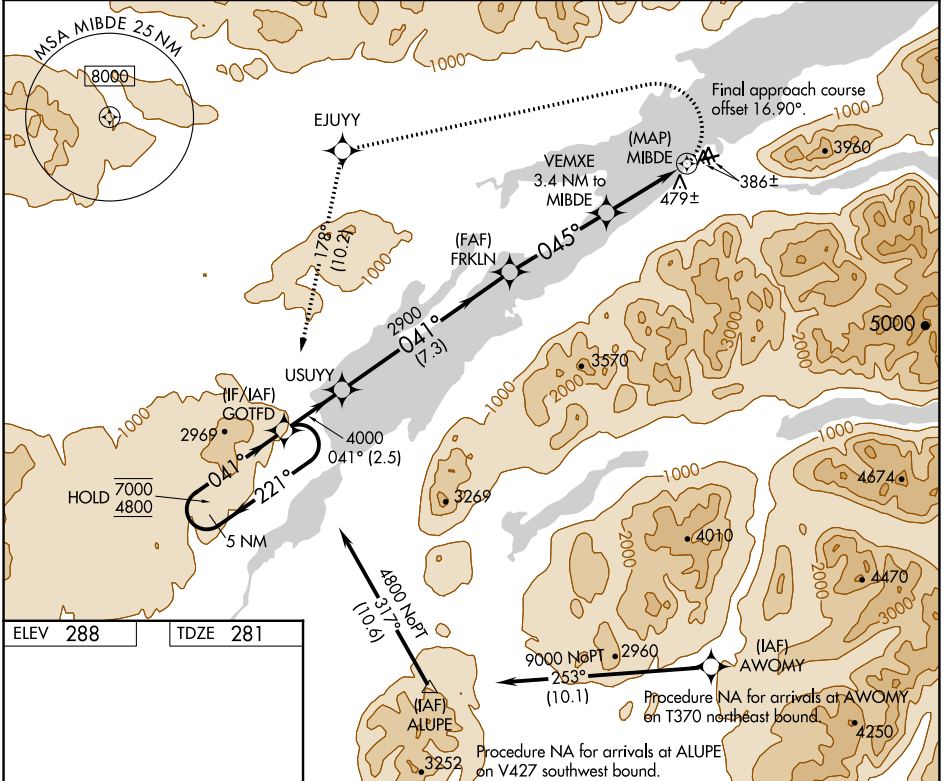
RNAV (GPS) RWY 6R

WILDER RUNWAY (Ø5K)(PAKX)

RNP APCH - GPS.
Procedure NA at night. Rwy 6R helicopter visibility reduction below 1 SM NA. Circling NA south of Rwy 6R-24L.
-19°C

MISSED APPROACH: Climbing left turn to 4800 direct EJUY and on track 178° to GOTFD and hold, continue climb-in-hold to 4800.

AWOS-3P 118.025	ANCHORAGE CENTER 118.8 351.8	CTAF 122.9
---------------------------	--	----------------------



ELEV 288	TDZE 281

5 NM Holding Pattern	GOTFD	Visual Segment - Obstacles.	4800	EJUY	GOTFD
				tr 178°	
7000 ← 221°	USUY				
4800 041° →					
	4000	FRKLN	VEMXE 3.4 NM to MIBDE	MIBDE	
		2900	045°	1580	
	← 2.5 NM	← 7.3 NM	← 4.1 NM	← 3.4 NM	← 0.5 NM
CATEGORY	A	B	C	D	
LNAV MDA	860-1	579 (600-1)		NA	
CIRCLING	1280-1¼ 992 (1000-1¼)	1980-1½ 1692 (1700-1½)		NA	

AK, 16 MAY 2024 to 11 JUL 2024

AK, 16 MAY 2024 to 11 JUL 2024