

LOC/DME I-AKR <b>110.9</b> Chan <b>46</b>	APP CRS <b>249°</b>	Rwy Idg TDZE Apt Elev	<b>6074</b> <b>1059</b> <b>1068</b>
---	------------------------	-----------------------------	---

# LOC RWY 25

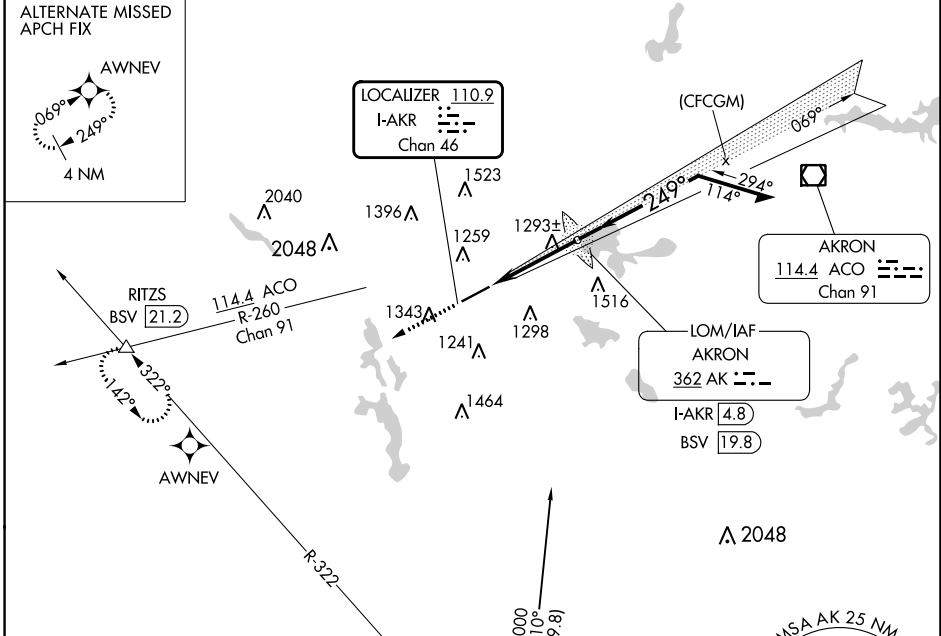
AKRON FULTON INTL (AKR)

ADF or DME or RADAR required for procedure entry.

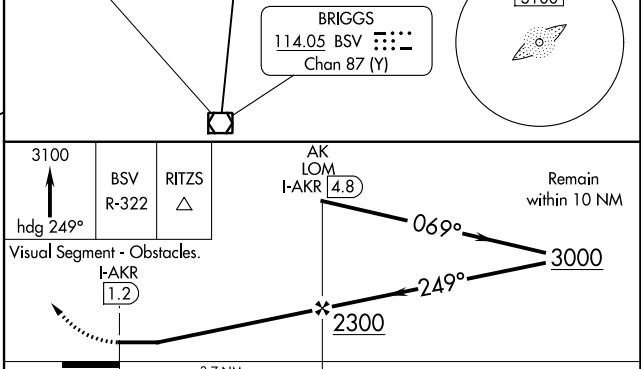
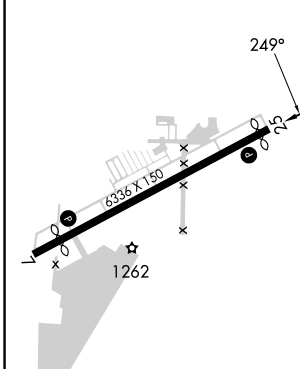
**▽** Rwy 25 helicopter visibility reduction below 1 SM NA.  
**▲** Circling Rwy 7 NA at night.

MISSED APPROACH: Climb to 3100 on heading 249° and BSV VOR/DME R-322 to RITZS INT/BSV 21.2 DME and hold.

ASOS <b>126.825</b>	CLEVELAND APP CON * <b>125.5 371.875</b>	CLNC DEL <b>121.6</b>	UNICOM <b>123.075 (CTAF) 0</b>
------------------------	---	--------------------------	-----------------------------------



ELEV 1068	TDZE 1059
-----------	-----------



CATEGORY	A	B	C	D
S-LOC 25	1560-1	501 (500-1)	1560-1 $\frac{3}{8}$	501 (500-1 $\frac{3}{8}$ )
<b>CIRCLING</b>	1600-1 532 (600-1)	1680-1 612 (700-1)	1800-2 732 (800-2)	1840-2 $\frac{1}{2}$ 772 (800-2 $\frac{1}{2}$ )

EC-2, 13 JUN 2024 to 11 JUL 2024

EC-2, 13 JUN 2024 to 11 JUL 2024