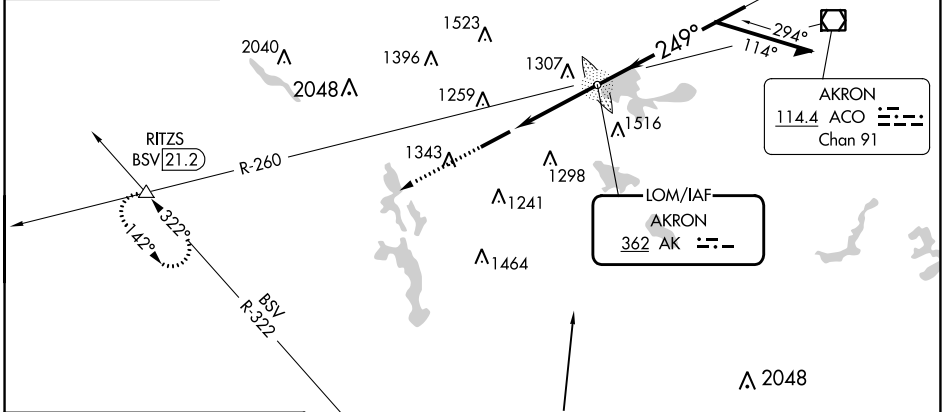
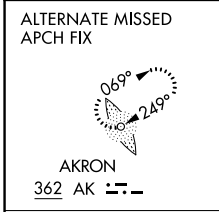


LOM AK 362	APP CRS 249°	Rwy Idg TDZE Apt Elev	6074 1059 1068
----------------------	------------------------	-----------------------------	---

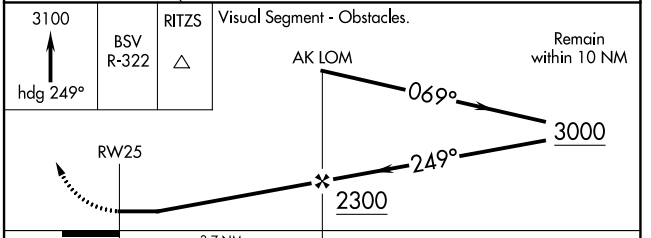
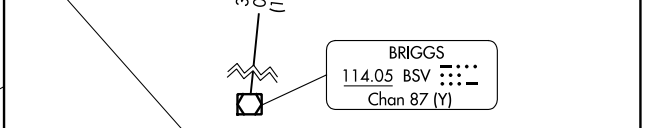
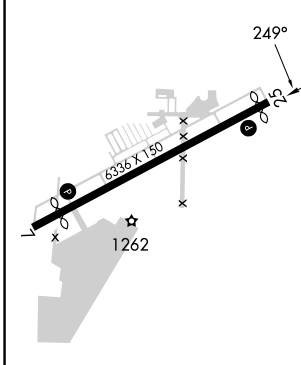
NDB RWY 25

AKRON FULTON INTL (AKR)

<p>▼ Rwy 25 helicopter visibility reduction below 1 SM NA. ▲ Circling Rwy 7 NA at night.</p>		<p>MISSED APPROACH: Climb to 3100 on heading 249° and BSV VOR/DME R-322 to RITZS INT/BSV 21.2 DME and hold.</p>	
ASOS 126.825	CLEVELAND APP CON * 125.5 371.875	CLNC DEL 121.6	UNICOM 123.075 (CTAF) 0



ELEV 1068	TDZE 1059
-----------	-----------



REIL Rwy 7 and 25 0
MIRL Rwy 7-25 0

FAF to MAP 3.7 NM

Knots	60	90	120	150	180
Min:Sec	3:42	2:28	1:51	1:29	1:14

CATEGORY	A	B	C	D
S-25	1620-1	561 (600-1)	1620-1½	561 (600-1½)
CIRCLING	1620-1 552 (600-1)	1680-1 612 (700-1)	1800-2 732 (800-2)	1840-2½ 772 (800-2½)

EC-2, 13 JUN 2024 to 11 JUL 2024

EC-2, 13 JUN 2024 to 11 JUL 2024