

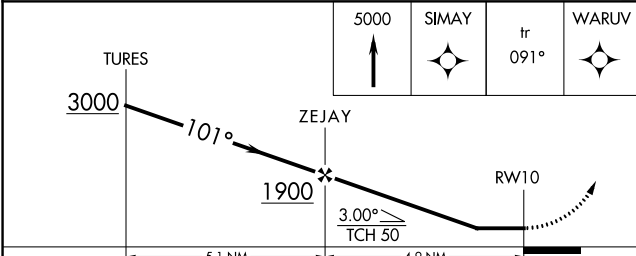
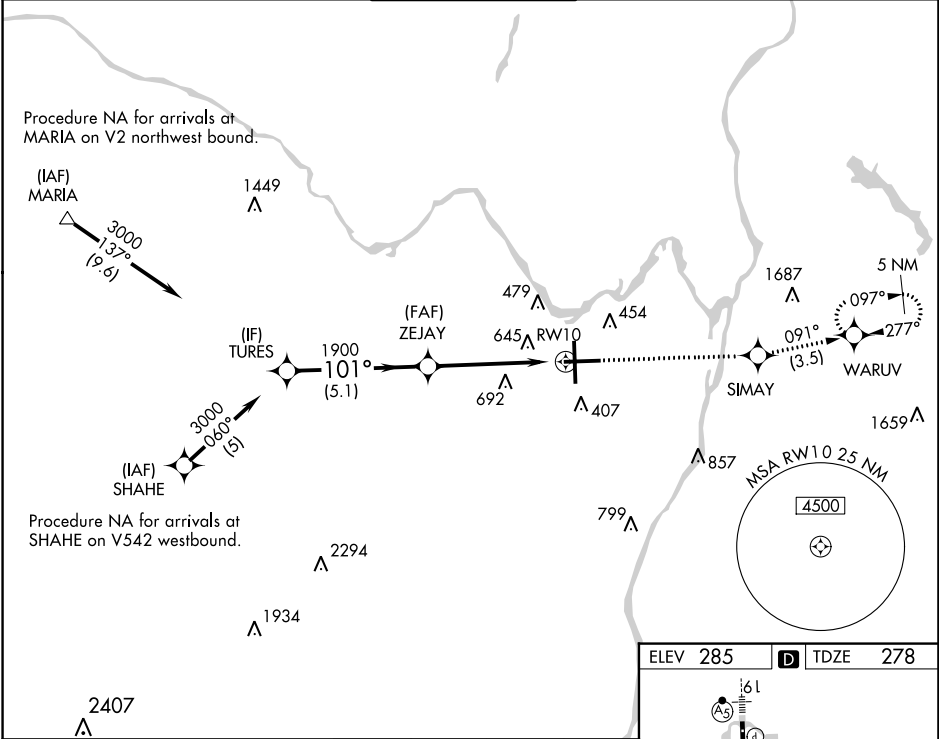
WAAS CH <b>97523</b> <b>W10A</b>	APP CRS <b>101°</b>	Rwy Idg <b>6780</b> TDZE <b>278</b> Apt Elev <b>285</b>
--	------------------------	---

# RNAV (GPS) RWY 10

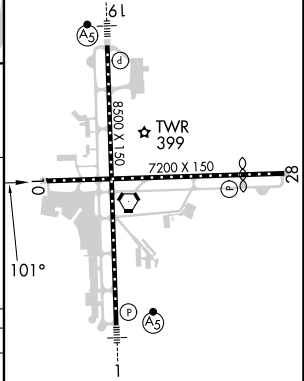
ALBANY INTL (ALB)

RNP APCH - GPS.	MISSED APPROACH: Climb to 5000 direct SIMAY and on track 091° to WARUV and hold, continue climb-in-hold to 5000.
<p>▼ Circling NA West of Rwy 1-19. Procedure NA at night.</p> <p>▲ Rwy 10 helicopter visibility reduction below 1 SM NA.</p>	

D-ATIS <b>120.45</b>	ALBANY APP CON <b>132.825 307.2</b>	ALBANY TOWER <b>119.5 257.8</b>	GND CON <b>121.7 348.6</b>	CLNC DEL <b>127.50</b>
-------------------------	--	------------------------------------	-------------------------------	---------------------------



ELEV 285	TDZE 278
----------	----------



CATEGORY	A	B	C	D
LP MDA	840-1 562 (600-1)		840-1 5/8 562 (600-1 5/8)	
LNVA MDA	900-1 622 (700-1)		900-1 3/4 622 (700-1 3/4)	
CIRCLING	900-1 615 (700-1)		900-1 3/4 615 (700-1 3/4)	960-2 1/4 675 (700-2 1/4)

TDZ/CL Rwy 1  
HIRL Rwy 1-19  
MIRL Rwy 10-28  
REIL Rwy 10 and 28

NE-2, 13 JUN 2024 to 11 JUL 2024

NE-2, 13 JUN 2024 to 11 JUL 2024