

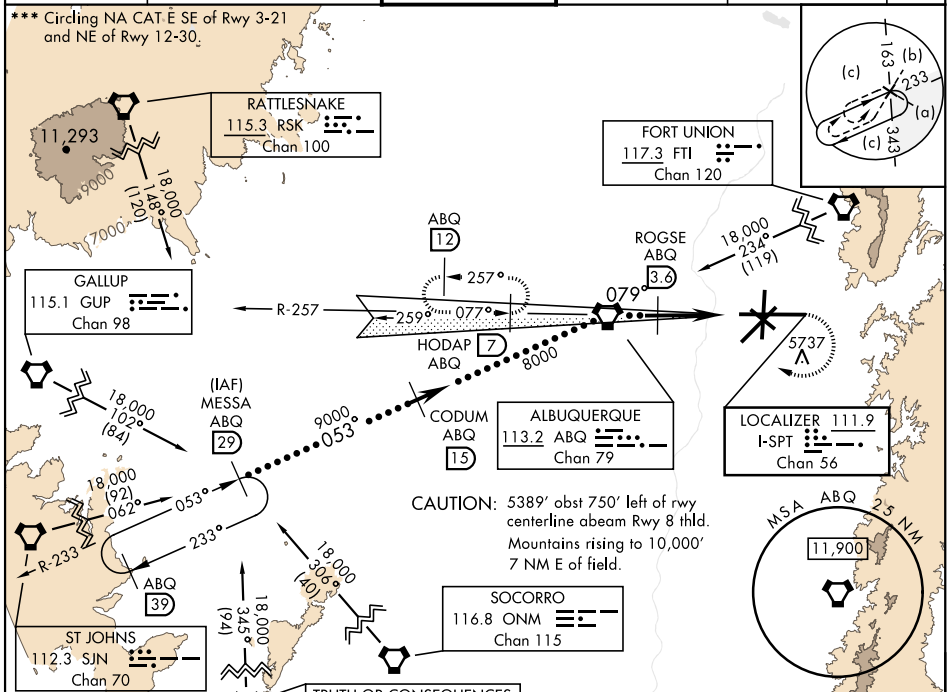
HI-ILS or LOC RWY 8

LOC I-SPT 111.9	APCH CRS 079°	Rwy ldg 12,793 TDZE 5320 Arprt Elev 5355	AL-12 [USAF]	ALBUQUERQUE INTL SUNPORT (KABQ)
---------------------------	-------------------------	---	--------------	---------------------------------

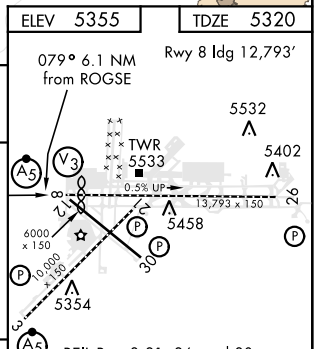
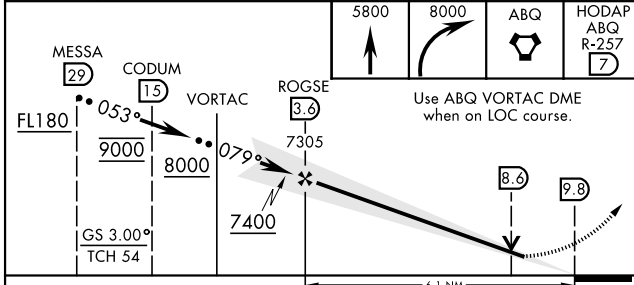
DME required.

A5 MALSR
 MISSED APPROACH: Climb to 5800 then climbing right turn to 8000 direct ABQ VORTAC and ABQ R-257 to HODAP/ABQ 7 DME and hold.

ATIS 118.0 257.7	APP CON 123.9 354.1	TOWER 120.3 351.9	GND CON 121.9 348.6	CLNC DEL 119.2 259.3	ASR
----------------------------	-------------------------------	-----------------------------	-------------------------------	--------------------------------	-----



ELEV 5355	TDZE 5320
-----------	-----------



CATEGORY	C	D	E
S-ILS 8*	5529/24	209 (300-½)	
S-LOC 8**	5740/40	420 (500-¾)	
*** CIRCLING	5920-1½ 565 (600-1½)	6460-3	1105 (1200-3)

FAF to MAP 6.1 NM					
Knots	120	140	160	180	200
Min:Sec	3:03	2:37	2:17	2:02	1:50

HI-ILS or LOC RWY 8

SW-1, 13 JUN 2024 to 11 JUL 2024

SW-1, 13 JUN 2024 to 11 JUL 2024