

MIERA TWO ARRIVAL

AL-12 (FAA)

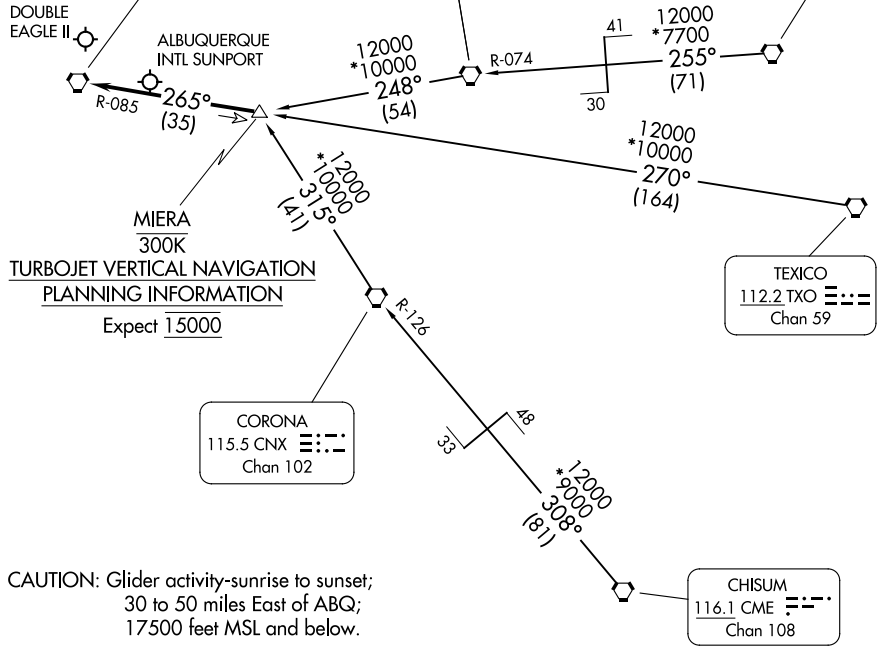
ALBUQUERQUE, NEW MEXICO

ALBUQUERQUE APP CON
123.9 354.1
ABQ D-ATIS
118.0 257.7
AEG ATIS
119.025

ALBUQUERQUE
113.2 ABQ Chan 79

ANTON CHICO
117.8 ACH Chan 125

TUCUMCARI
113.6 TCC Chan 83



**TURBOJET VERTICAL NAVIGATION
PLANNING INFORMATION**
Expect 15000

CAUTION: Glider activity-sunrise to sunset;
30 to 50 miles East of ABQ;
17500 feet MSL and below.

NOTE: Chart not to scale.

ARRIVAL ROUTE DESCRIPTION

CHISUM TRANSITION (CME.MIERA2): From over CME VORTAC via CME R-308 and CNX R-126 to CNX VORTAC, then via CNX R-315 to MIERA DME fix. Thence. . .

TEXICO TRANSITION (TXO.MIERA2): From over TXO VORTAC via TXO R-270 and ABQ R-085 to MIERA DME fix. Thence. . .

TUCUMCARI TRANSITION (TCC.MIERA2): From over TCC VORTAC via TCC R-255 and ACH R-074 to ACH VORTAC, then via ACH R-248 to MIERA DME fix. Thence. . .

. . . From over MIERA DME fix via ABQ R-085 to ABQ VORTAC. Expect vectors to final approach course after passing MIERA DME fix.

SW-1, 13 JUN 2024 to 11 JUL 2024

SW-1, 13 JUN 2024 to 11 JUL 2024