

LOC I-BXY 111.9	APP CRS 135°	Rwy Idg TDZE Apt Elev	5800 386 394
---------------------------	------------------------	-----------------------------	---

ILS or LOC RWY 13

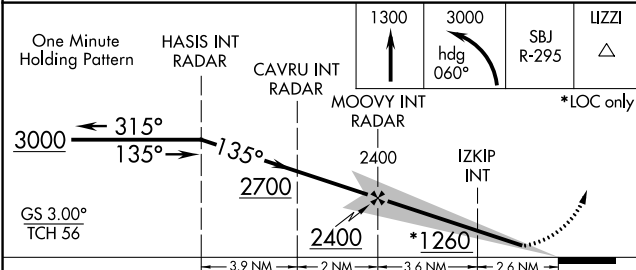
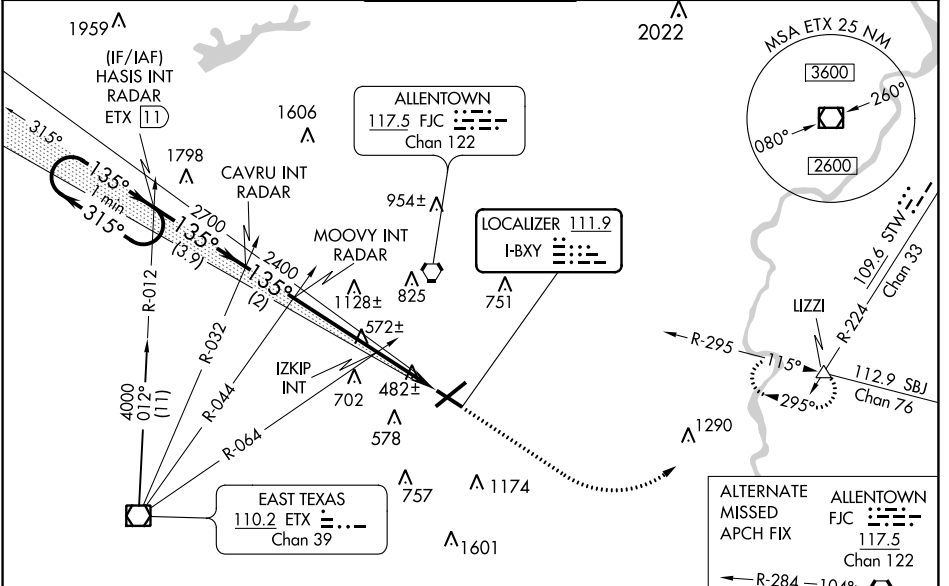
LEHIGH VALLEY INTL (ABE)

⚠ For inoperative MALSR, increase IZKIP fix minimums S-LOC 13 Cat C/D visibility to 1 mile.

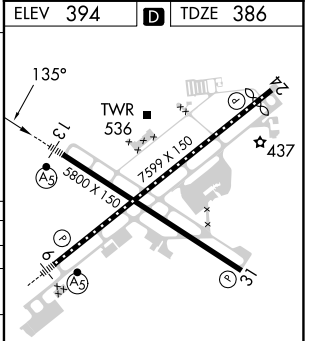
MALSR
AS

MISSED APPROACH: Climb to 1300 then climbing left turn to 3000 on heading 060° and on SBJ VOR/DME R-295 to LIZZI INT and hold.

ATIS 126.975	ALLENTOWN APP CON 119.65 124.45 351.8	ALLENTOWN TOWER 120.5 257.95	GND CON 121.9 257.95	CLNC DEL 124.05 257.95
-------------------------------	--	---	---------------------------------------	---



ELEV 394	D	TDZE 386
----------	----------	----------



CATEGORY	A	B	C	D
S-ILS 13	586-1/2 200 (200-1/2)			
S-LOC 13	1260-1/2 874 (900-1/2)	1260-3/4 874 (900-3/4)	1260-2	874 (900-2)
C CIRCLING	1260-1 1/4	866 (900-1 1/4)	1260-2 1/2 866 (900-2 1/2)	1600-3 1206 (1300-3)
IZKIP FIX MINIMUMS (DUAL VOR RECEIVERS REQUIRED)				
S-LOC 13	740-1/2	354 (400-1/2)	740-5/8	354 (400-5/8)
C CIRCLING	840-1 446 (500-1)	900-1 506 (600-1)	1180-2 1/4 786 (800-2 1/4)	1600-3 1206 (1300-3)

REIL Rwy 24 and 31	HIRL Rwy 6-24 and 13-31
FAF to MAP 6.2 NM	
Knots	60 90 120 150 180
Min:Sec	6:12 4:08 3:06 2:29 2:04

NE-4, 13 JUN 2024 to 11 JUL 2024

NE-4, 13 JUN 2024 to 11 JUL 2024