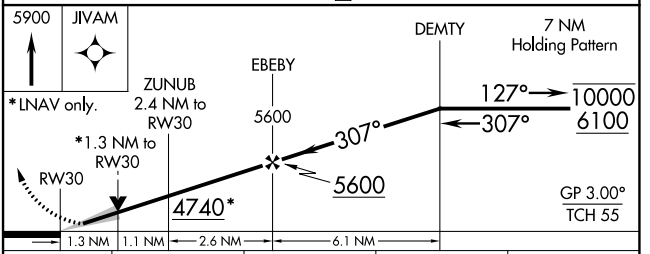
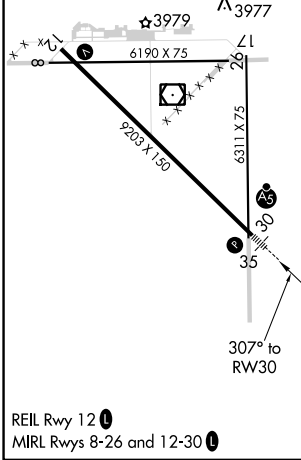
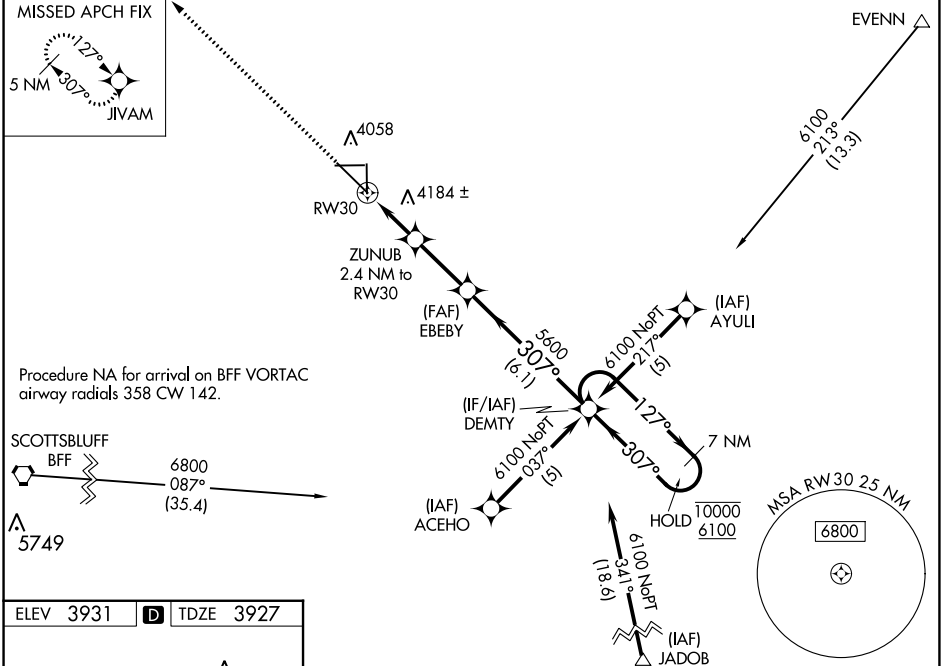


WAAS CH <b>82102</b> <b>W30A</b>	APP CRS <b>307°</b>	Rwy Idg <b>9202</b> TDZE <b>3927</b> Apt Elev <b>3931</b>
--	------------------------	---

# RNAV (GPS) RWY 30

ALLIANCE MUNI (AIA)

RNP APCH.	MALSR 	MISSED APPROACH: Climb to 5900 direct JIVAM and hold.
<p><b>⚠</b> For uncompensated Baro-VNAV systems, LNAV/VNAV NA below -22°C or above 50°C. For inop ALS, increase LNAV/VNAV visibility all Cats to 7/8 SM and LNAV Cats C/D visibility to 1 3/8 SM.</p>		
ASOS <b>135.075</b>	DENVER CENTER <b>127.95 338.2</b>	UNICOM <b>123.0 (CTAF) 0</b>



CATEGORY	A	B	C	D
LPV DA	4127-1/2 200 (200-1/2)			
LNAV/VNAV DA	4221-1/2 294 (300-1/2)			
LNAV MDA	4400-1/2 473 (500-1/2)	4400-1 473 (500-1)		
CIRCLING	4460-1 529 (600-1)	4520-1 589 (600-1)	4580-1 3/4 649 (700-1 3/4)	4640-2 1/4 709 (800-2 1/4)

NC-2, 13 JUN 2024 to 11 JUL 2024

NC-2, 13 JUN 2024 to 11 JUL 2024