

WAAS CH <b>45537</b> <b>W16A</b>	APP CRS <b>157°</b>	Rwy Idg TDZE Apt Elev	<b>5000</b> <b>200</b> <b>200</b>
--	------------------------	-----------------------------	---

# RNAV (GPS) RWY 16

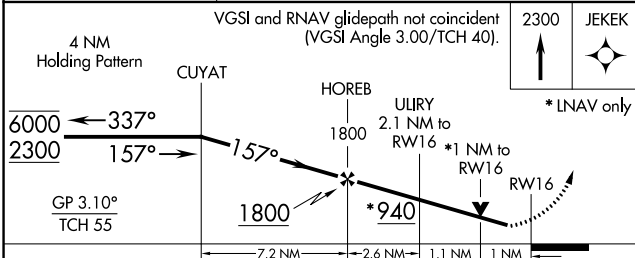
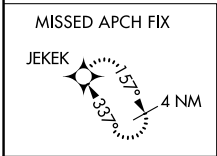
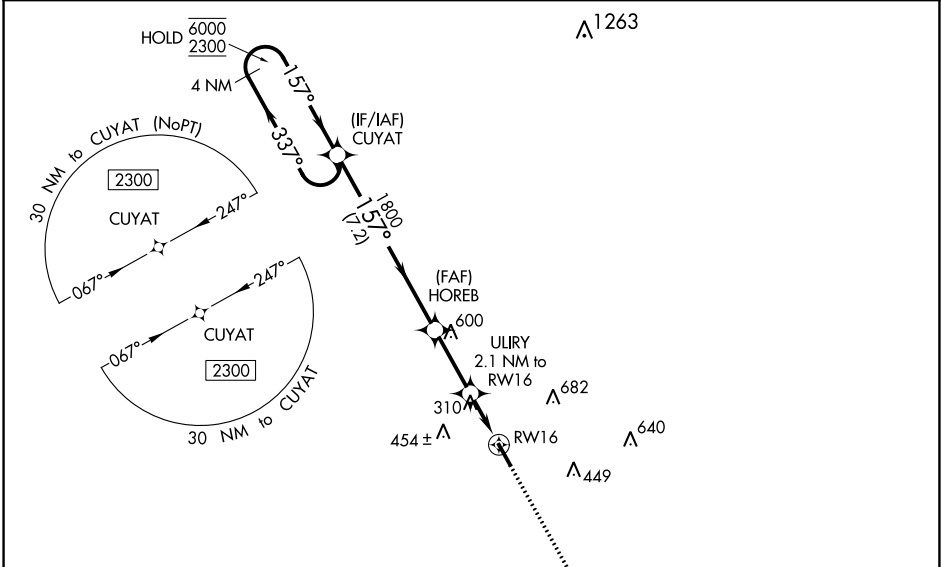
BACON COUNTY (AMG)

RNP APCH.

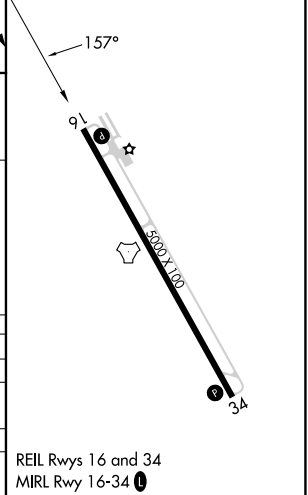
**▼** Rwy 16 helicopter visibility reduction below 3/4 SM NA.  
**▲** For uncompensated Baro-VNAV systems, LNAV/VNAV NA below -4°C or above 54°C.

MISSED APPROACH: Climb to 2300 direct to JEKEK and hold.

ASOS <b>118.325</b>	JACKSONVILLE CENTER <b>127.575 269.025</b>	UNICOM <b>122.7 (CTAF) 1</b>
------------------------	---	---------------------------------



ELEV 200	TDZE 200
----------	----------



CATEGORY	A	B	C	D
LPV DA		461-7/8	261 (300-7/8)	
LNAV/VNAV DA		468-7/8	268 (300-7/8)	
LNAV MDA		560-1	360 (400-1)	
<b>C</b> CIRCLING	720-1	520 (600-1)	1000-2 1/4 800 (800-2 1/4)	1000-2 1/2 800 (800-2 1/2)

REIL Rwy 16 and 34  
MIRL Rwy 16-34 1

SE-4, 13 JUN 2024 to 11 JUL 2024

SE-4, 13 JUN 2024 to 11 JUL 2024