

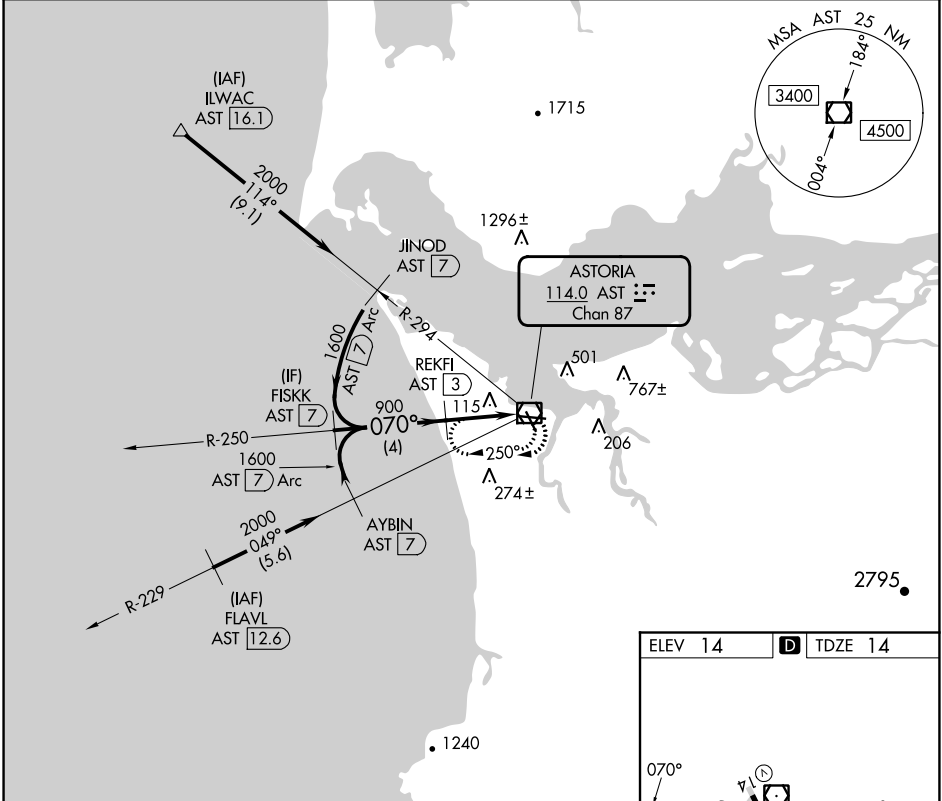
VOR/DME AST 114.0 Chan 87	APP CRS 070°	Rwy Idg 4894 TDZE 14 Apt Elev 14
---	------------------------	---

COPTER VOR RWY 8

ASTORIA RGNL (AST)

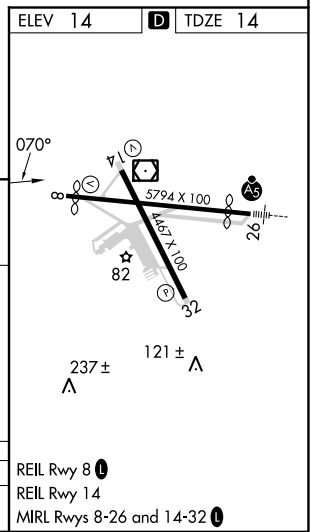
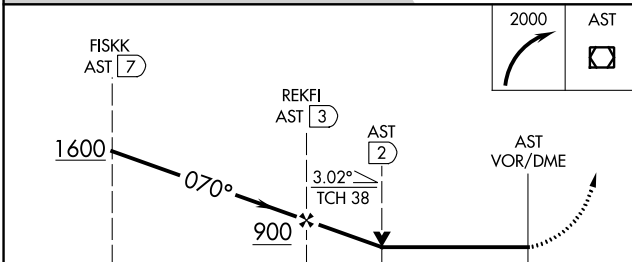
DME required. ▼ ▲ NA	MISSED APPROACH: Climbing right turn to 2000 in AST VOR/DME holding pattern.
----------------------------	--

ASOS 135.375	SEATTLE CENTER 124.2 317.6	UNICOM 122.8 (CTAF) 0
------------------------	--------------------------------------	---------------------------------



NW-1, 13 JUN 2024 to 11 JUL 2024

NW-1, 13 JUN 2024 to 11 JUL 2024



CATEGORY	COPTER
H-8	580-3/4 566 (600-3/4)