

LOC/DME I-OMO 111.55 Chan 52 (Y)	APP CRS 095°	Rwy Idg 9000 TDZE 1000 Apt Elev 1026
--	------------------------	---

ILS or LOC RWY 10

HARTSFIELD-JACKSON ATLANTA INTL (ATL)

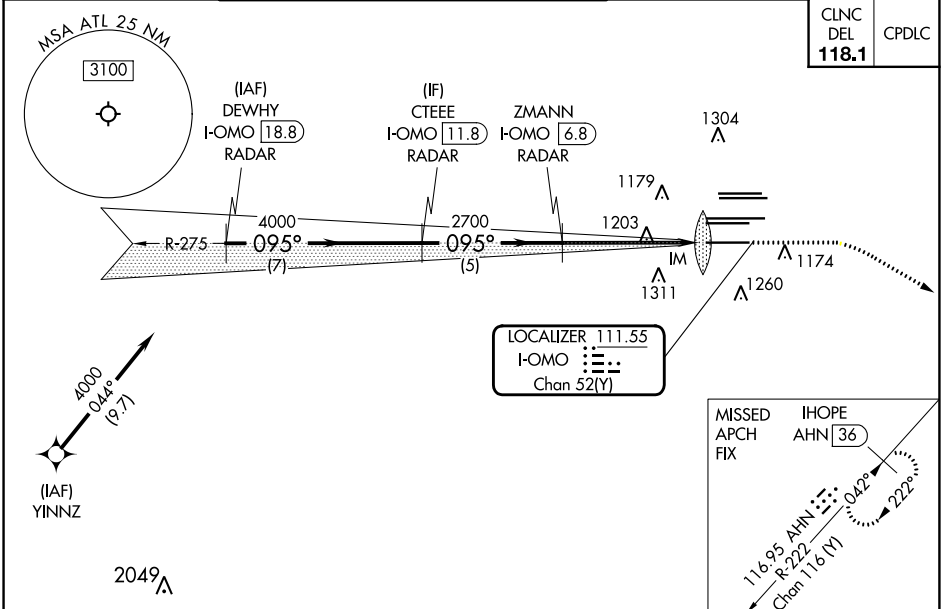
DME or RADAR required. RNP APCH - GPS from YINNZ.

Simultaneous approach authorized with Rwy 9L or 8R or 8L, or Rwy 9L and 8L. Localizer not suitable for electronic rollout guidance.

ALSF-2

MISSED APPROACH: Climb to 1400 then dimbing right turn to 3000 on heading 120° and AHN R-222 to IHOPE/AHN 36 DME and hold.

D-ATIS ARR 119.65	ATLANTA APP CON DEP 125.55	ATLANTA TOWER 8L-26R 8R-26L 9L-27R 9R-27L 10-28 RWYs 119.1 125.325 123.85 119.3 119.5 254.4	ALL RWYs 254.4	GND CON (8L-26R,8R-26L) (9L-27R,9R-27L) 10-28 RWYs 121.9 121.75 121.65 254.4
-----------------------------	--------------------------------------	--	--------------------------	---



SE-4, 13 JUN 2024 to 11 JUL 2024

SE-4, 13 JUN 2024 to 11 JUL 2024

ELEV 1026	TDZE 1000		
DEWHY I-OMO 18.8	CTEEE I-OMO 11.8	ZMANN I-OMO 6.8	IHOPE AHN 36
4000	4000	2700	2700
GS 3.00°	095°	095°	hdg 120°
TCH 55	7 NM	5 NM	3.9 NM
CATEGORY	A	B	C
S-ILS 10	1200/18		200 (200-½)
S-LOC 10	1460/24	460 (500-½)	460 (500-¾)

