

LOC/DME I-PKU 111.75 Chan 54(Y)	APP CRS 275°	Rwy ldg TDZE Apt Elev 9000 998 1026
---	------------------------	---

ILS PRM RWY 28 (CLOSE PARALLEL)

HARTSFIELD-JACKSON ATLANTA INTL (ATL)

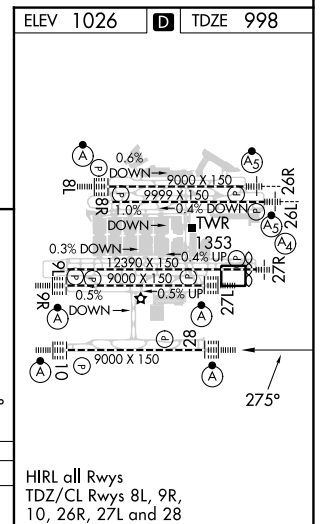
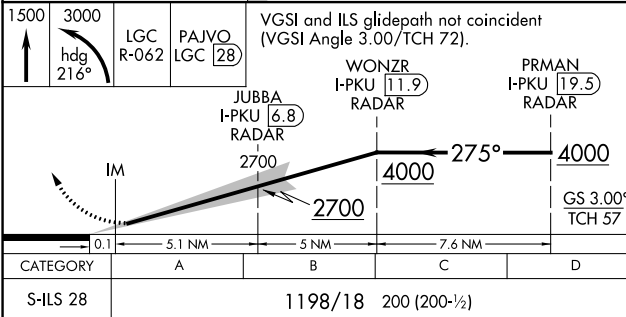
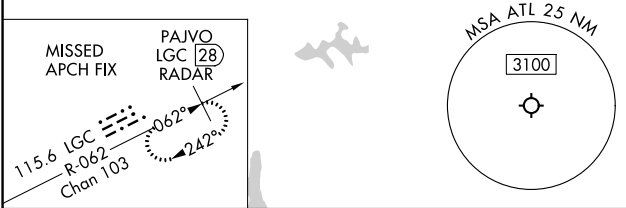
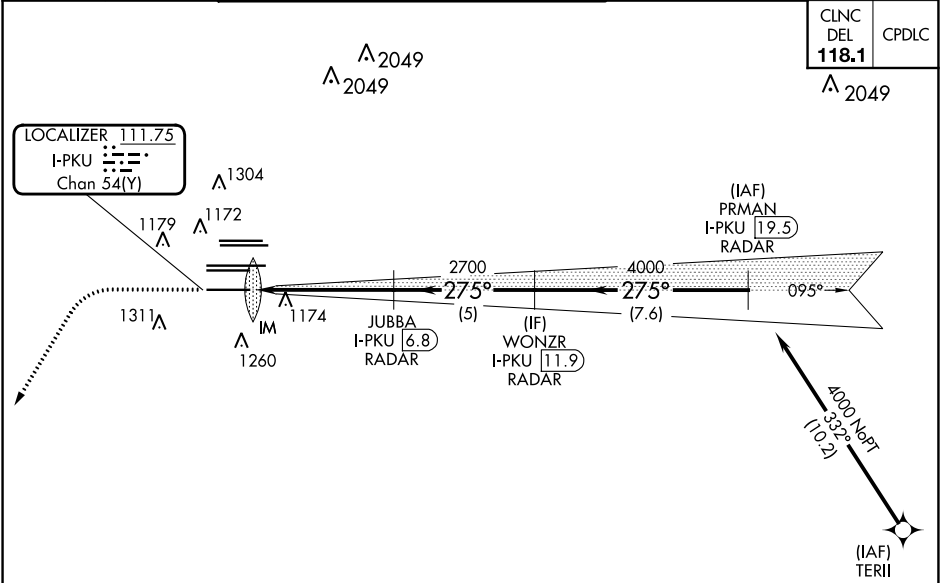
RNAV 1-GPS or RADAR required for procedure entry.
From TERII: RNAV 1-GPS required. DME or RADAR required.

Simultaneous approach authorized. Use of FD or AP required during simultaneous operations. Dual VHF comm required. See additional requirements on AAUP.

ALSIF-2

MISSED APPROACH: Climb to 1500 then climbing left turn to 3000 on heading 216° and LGC VORTAC R-062 to PAJVO/LGC 28 DME/RADAR and hold.

D-ATIS ARR 119.65 DEP 125.55	ATLANTA APP CON 127.9 379.9	ATLANTA TOWER 8L-26R 8R-26L 9L-27R 9R-27L 10-28 RWYS 119.1 125.325 123.85 119.3 119.5 254.4 PRM 133.425	ALL RWYS (8L-26R,8R-26L) (9L-27R,9R-27L) 10-28 RWYS 121.9 121.75 121.65 254.4
--	---------------------------------------	--	--



SE-4, 13 JUN 2024 to 11 JUL 2024

SE-4, 13 JUN 2024 to 11 JUL 2024