

ATLANTA, GEORGIA

AL-26 (FAA)

ILS PRM RWY 9R (CAT II & III)

24137

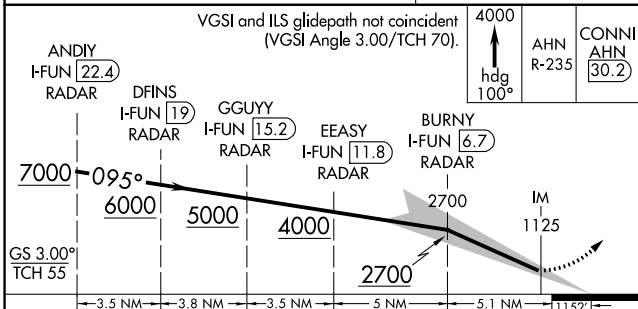
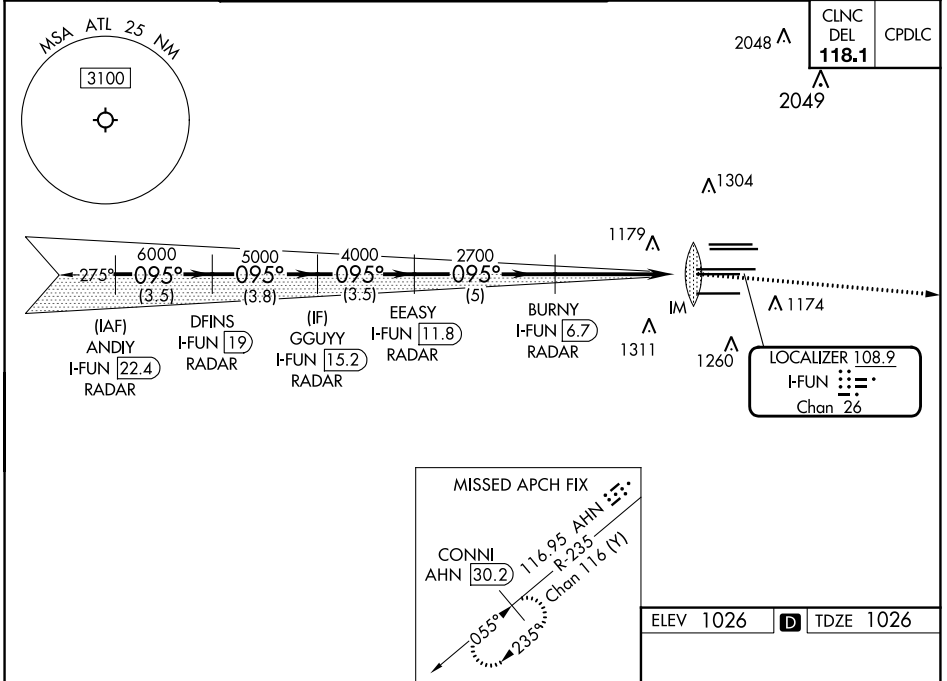
(CLOSE PARALLEL)

HARTSFIELD-JACKSON ATLANTA INTL (ATL)

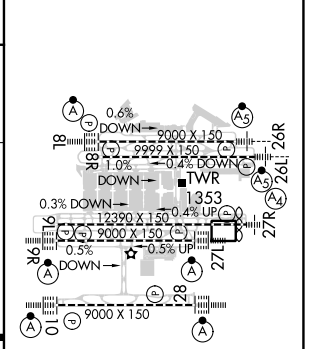
|   |                        |   |
|---|------------------------|---|
| LOC/DME I-FUN<br><b>108.9</b><br>Chan <b>26</b> | APP CRS<br><b>095°</b> | Rwy Idg <b>9000</b><br>TDZE <b>1026</b><br>Apt Elev <b>1026</b> |
|---|------------------------|---|

|  |  |             |  |
|--|--|-------------|--|
| RADAR required for procedure entry, DME.   |  | ALS-F-2<br> | MISSED APPROACH: Climb to 4000 on heading 100° and AHN VOR/DME R-235 to CONNI/AHN 30.2 DME and hold. |
| <p>Simultaneous approach authorized. Use of FD or AP required during simultaneous operations. Dual VHF comm required. See additional requirements on AAUP.</p> |  |             |  |

|  |  |   |  |  |  |                             |   |
|--|--|---|--|--|--|-----------------------------|---|
| D-ATIS<br>ARR <b>119.65</b><br>DEP <b>125.55</b> | ATLANTA<br>APP CON<br><b>127.9 379.9</b> | ATLANTA TOWER<br>8L-26R 8R-26L 9L-27R 9R-27L 10-28 RWYS<br><b>119.1 125.325 123.85 119.3 119.5 254.4</b><br><b>PRM 132.55</b> |  |  |  | ALL<br>RWYS<br><b>254.4</b> | GND CON<br>(8L-26R,8R-26L) (9L-27R,9R-27L) 10-28 RWYS<br><b>121.9 121.75 121.65 254.4</b> |
|--|--|---|--|--|--|-----------------------------|---|



|           |                    |
|-----------|--------------------|
| ELEV 1026 | <b>D</b> TDZE 1026 |
|-----------|--------------------|



|          |                              |   |   |   |
|----------|------------------------------|---|---|---|
| CATEGORY | A                            | B | C | D |
| S-ILS 9R | CAT II RA 118/12 100 DA 1126 |   |   |   |
| S-ILS 9R | CAT III RVR 03               |   |   |   |

**CATEGORY II & III ILS SPECIAL AIRCREW & AIRCRAFT CERTIFICATION REQUIRED**

HIRL all Rwy's  
TDZ/CL Rwy's 8L, 9R, 10, 26R, 27L and 28

ATLANTA, GEORGIA  
Amdt 3 22APR21

33°38'N-84°26'W HARTSFIELD-JACKSON ATLANTA INTL (ATL)  
ILS PRM RWY 9R (CAT II & III) (CLOSE PARALLEL)

SE-4, 13 JUN 2024 to 11 JUL 2024

SE-4, 13 JUN 2024 to 11 JUL 2024