

WAAS CH 56300 W26A	APP CRS 275°	Rwy Idg 9999 TDZE 996 Apt Elev 1026
--	------------------------	--

RNAV (GPS) RWY 26L
HARTSFIELD-JACKSON ATLANTA INTL (ATL)

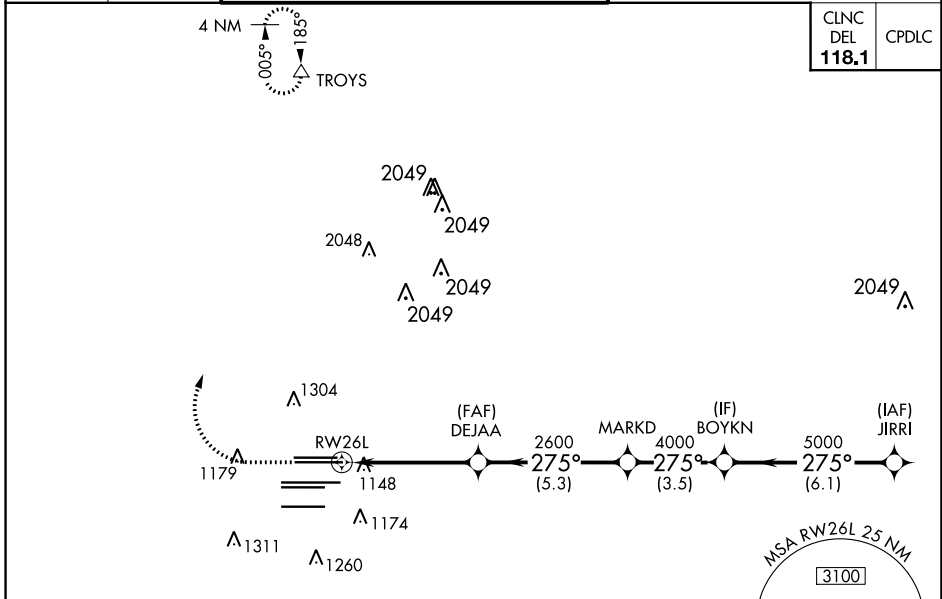
▼ For uncompensated Baro-VNAV systems, LNAV/VNAV NA below -7°C (20°F) or above 54°C (130°F). DME/DME RNP-0.3 NA. For inop MALSR, increase LPV all Cats visibility to RVR 4500, LNAV/VNAV all Cats visibility to RVR 6000. Simultaneous approach authorized with Rwy 27L or 27R or 28. LNAV procedure NA during simultaneous operations. Use of FD or AP providing RNAV track guidance required during simultaneous operations.

MALSR

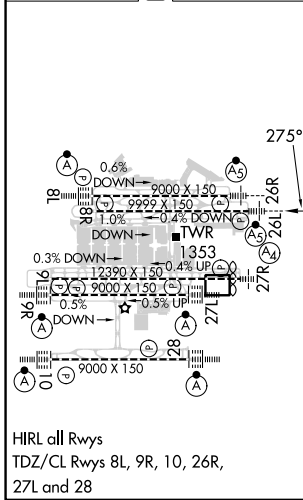


MISSED APPROACH:
Climb to 1500 then climbing right turn to 3500 direct TROYS and hold.

D-ATIS ARR 119.65	ATLANTA APP CON	ATLANTA TOWER					ALL RWYS	GND CON	ALL RWYS
DEP 125.55	127.9 379.9	8L-26R	8R-26L	9L-27R	9R-27L	10-28	(8L-26R, 8R-26L)	(9L-27R, 9R-27L)	10-28
		119.1	125.325	123.85	119.3	119.5	254.4	121.9	121.75 121.65 254.4



ELEV 1026	D	TDZE 996
-----------	----------	----------



RADAR REQUIRED

1500	3500	TROYS	VGSi and RNAV glidepath not coincident (VGSi Angle 3.00°/TCH 63).	
↑	↷	△	BOYKN	JIRRI
*LNAV only.			MARKD	JIRRI
*1.3 NM to RW26L			DEJAA 2600	5000
RW26L			4000	5000
			2600	GP 3.00° TCH 52
			1.3	3.6 NM
			5.3 NM	3.5 NM
			6.1 NM	
CATEGORY	A	B	C	D
LPV DA		1281/24	285 (300-½)	
LNAV/VNAV DA		1360/35	364 (400-⅓)	
LNAV MDA	1460/24	464 (500-½)	1460/50	464 (500-1)

SE-4, 13 JUN 2024 to 11 JUL 2024

SE-4, 13 JUN 2024 to 11 JUL 2024