

RNAV (GPS) PRM RWY 27L (SIMULTANEOUS CLOSE PARALLEL) HARTSFIELD-JACKSON ATLANTA INTL (ATL)

WAAS CH 65700 W27A	APP CRS 275°	Rwy Idg 8865 TDZE 999 Apt Elev 1026
--	------------------------	--

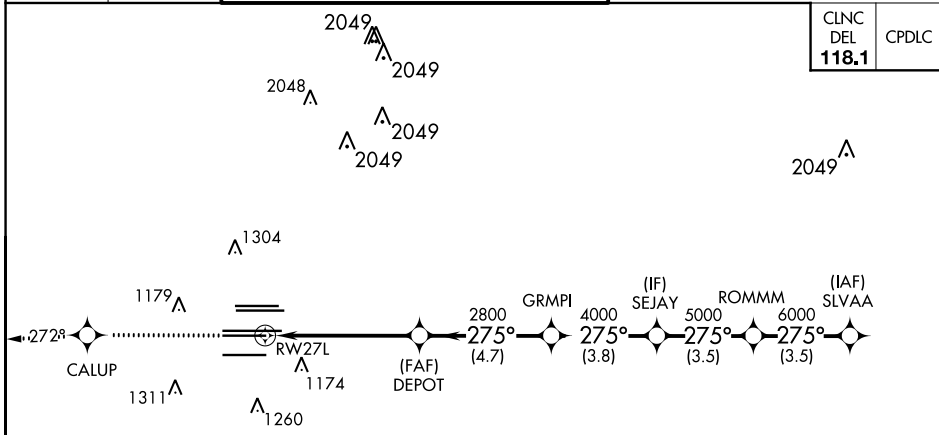
For uncompensated Baro-VNAV systems, LNAV/VNAV NA below -7°C (20°F) or above 54°C (130°F). DME/DME RNP-0.3 NA. Simultaneous close parallel approach authorized with ILS PRM and RNAV PRM Rwy 26R or 26L or 28, or Rwys 26R and 28, or Rwys 26L and 28. Dual VHF Comm required. Use of FD or AP providing RNAV track guidance required during simultaneous operations. See additional requirements on AAUP.

ALSF-2

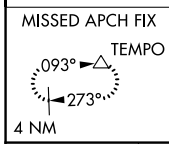


MISSED APPROACH: Climb to 4000 direct CALUP and on track 272° to TEMPO and hold.

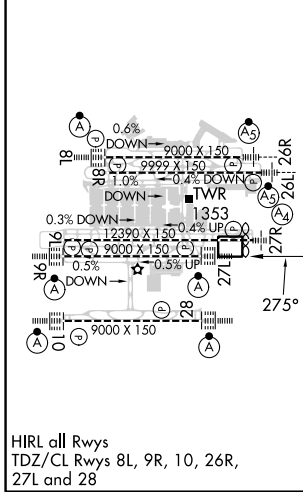
D-ATIS ARR 119.65 DEP 125.55	ATLANTA APP CON 127.9 379.9	ATLANTA TOWER 8L-26R 8R-26L 9L-27R 9R-27L 10-28 RWYS 119.1 125.325 123.85 119.3 119.5 254.4 PRM 132.55	ALL RWYS (8L-26R, 8R-26L) (9L-27R, 9R-27L) 10-28 121.9 121.75 121.65 254.4
--	--	---	--



CINC DEL 118.1	CPDLC
-----------------------------	-------



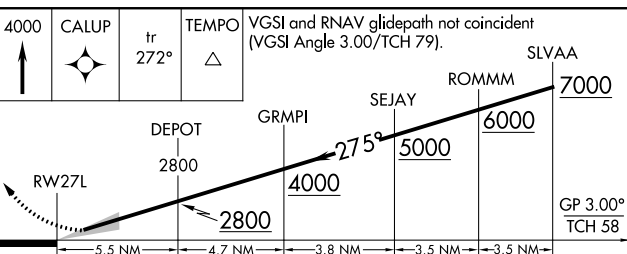
ELEV 1026	D	TDZE 999
-----------	----------	----------



HIRL all Rwys TDZ/CL Rwys 8L, 9R, 10, 26R, 27L and 28

ATLANTA, GEORGIA
Orig-A 12OC17

RADAR REQUIRED



CATEGORY	A	B	C	D
LPV DA		1199/18	200 (200-½)	
LNAV/VNAV DA		1528-1⅓	529 (600-1⅓)	

33°38'N-84°26'W

HARTSFIELD-JACKSON ATLANTA INTL (ATL)

RNAV (GPS) PRM RWY 27L (SIMULTANEOUS CLOSE PARALLEL)

SE-4, 13 JUN 2024 to 11 JUL 2024

SE-4, 13 JUN 2024 to 11 JUL 2024