

LOC I-MZX <b>111.75</b>	APP CRS <b>172°</b>	Rwy Idg <b>8001</b>
		TDZE <b>146</b>
		Apt Elev <b>146</b>

# ILS or LOC RWY 17

AUGUSTA RGNL AT BUSH FLD (AGS)

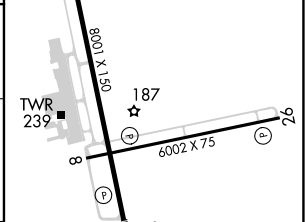
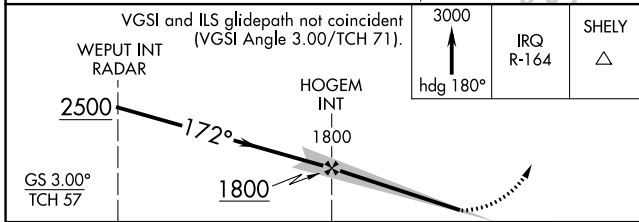
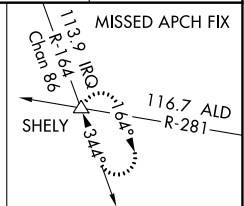
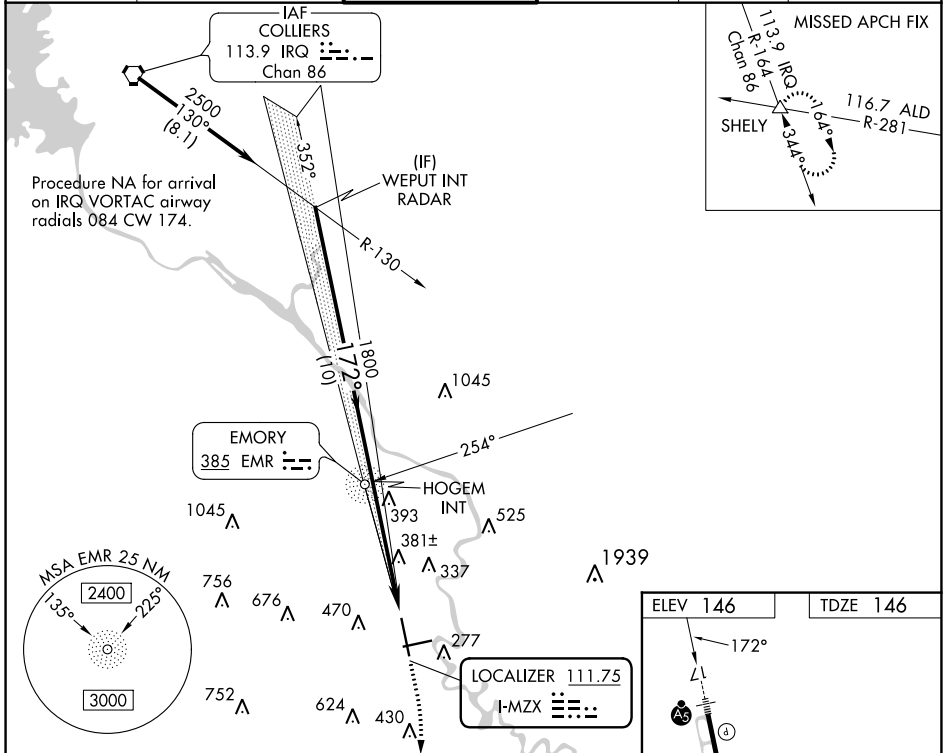
ADF required for LOC only.

**▽**  
**△** For inop ALS, increase S-LOC 17 Cats C and D visibility to 1 3/8 SM.

MALSR

MISSED APPROACH: Climb to 3000 on heading 180° and IRQ VORTAC R-164 to SHELLY INT and hold.

ATIS <b>132.75</b>	AUGUSTA APP CON ★ <b>126.8 270.3</b>	AUGUSTA TOWER ★ <b>118.7 (CTAF) 0 239.3</b>	GND CON <b>121.9 348.6</b>	CLNC DEL <b>118.65</b>	UNICOM <b>122.95</b>
-----------------------	---	--	-------------------------------	---------------------------	-------------------------



CATEGORY	A	B	C	D
S-ILS 17	351/24 205 (300-1/2)			
S-LOC 17	640/24	494 (500-1/2)	640/50	494 (500-1)
CIRCLING	780-1	634 (700-1)	780-1 3/4 634 (700-1 3/4)	940-2 1/2 794 (800-2 1/2)
	FAF to MAP 5 NM			
	Knots	60	90	120 150 180
	Min:Sec	5:00	3:20	2:30 2:00 1:40

SE-4, 13 JUN 2024 to 11 JUL 2024

SE-4, 13 JUN 2024 to 11 JUL 2024