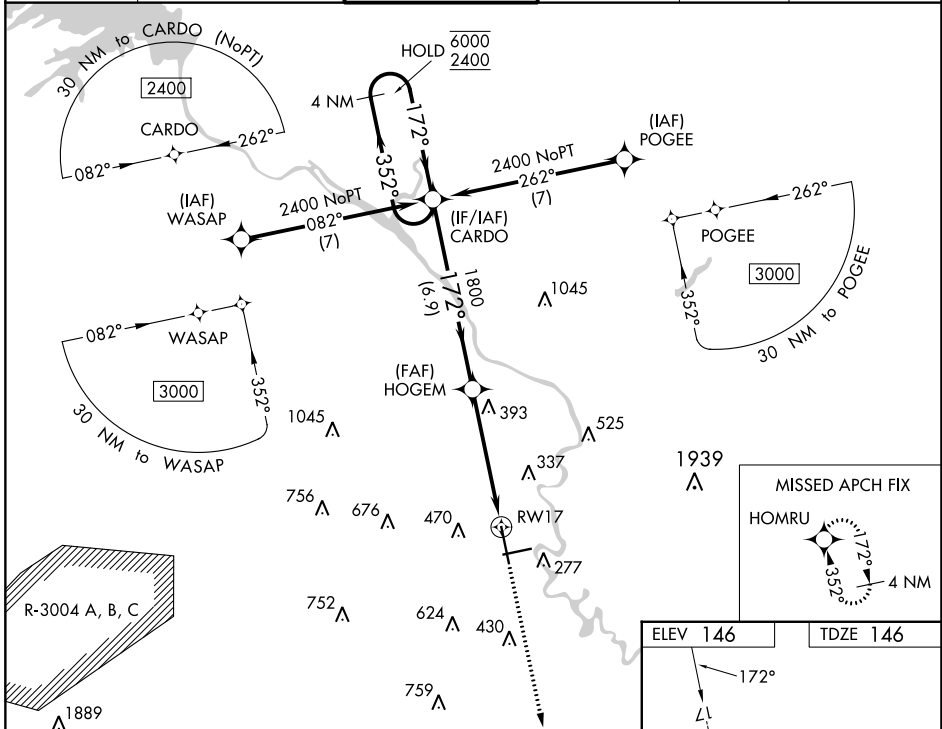


WAAS CH <b>77504</b> <b>W17A</b>	APP CRS <b>172°</b>	Rwy Idg TDZE <b>146</b> Apt Elev <b>146</b>	<b>8001</b>
--	------------------------	---	-------------

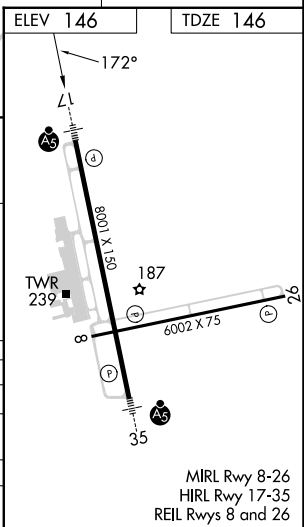
# RNAV (GPS) RWY 17

AUGUSTA RGNL AT BUSH FLD (AGS)

RNP APCH - GPS.				MALSR  MISSED APPROACH: Climb to 2100 direct HOMRU and hold.			
▼ For uncompensated Baro-VNAV systems, LNAV/VNAV NA below -6°C or above 54°C. ▲ For inop ALS, increase LNAV/VNAV all Cats visibility to RVR 4500.	ATIS <b>132.75</b>		AUGUSTA APP CON ★ <b>126.8 270.3</b>	AUGUSTA TOWER ★ <b>118.7 (CTAF) 0 239.3</b>	GND CON <b>121.9 348.6</b>	CLNC DEL <b>118.65</b>	UNICOM <b>122.95</b>



4 NM Holding Pattern CARDO VGSI and RNAV glidepath not coincident (VGSI Angle 3.00/TCH 71).				2100 	HOMRU 
6000 ← 352° 2400 ← 172°		HOGEM 1800 1.5 NM to RW17		RW17 	
GP 3.00° TCH 57		1800 6.9 NM		3.5 NM 1.5 NM	
CATEGORY	A	B	C	D	
LPV DA		351/24	205 (300-½)		
LNAV/VNAV DA		460/24	314 (400-½)		
LNAV MDA	700/24	554 (600-½)	700/60	554 (600-1¼)	
◻ CIRCLING	780-1	634 (700-1)	780-1¾ 634 (700-1¾)	940-2½ 794 (800-2½)	



SE-4, 13 JUN 2024 to 11 JUL 2024

SE-4, 13 JUN 2024 to 11 JUL 2024