

BANGOR, MAINE

HI-ILS Z or LOC Z RWY 15

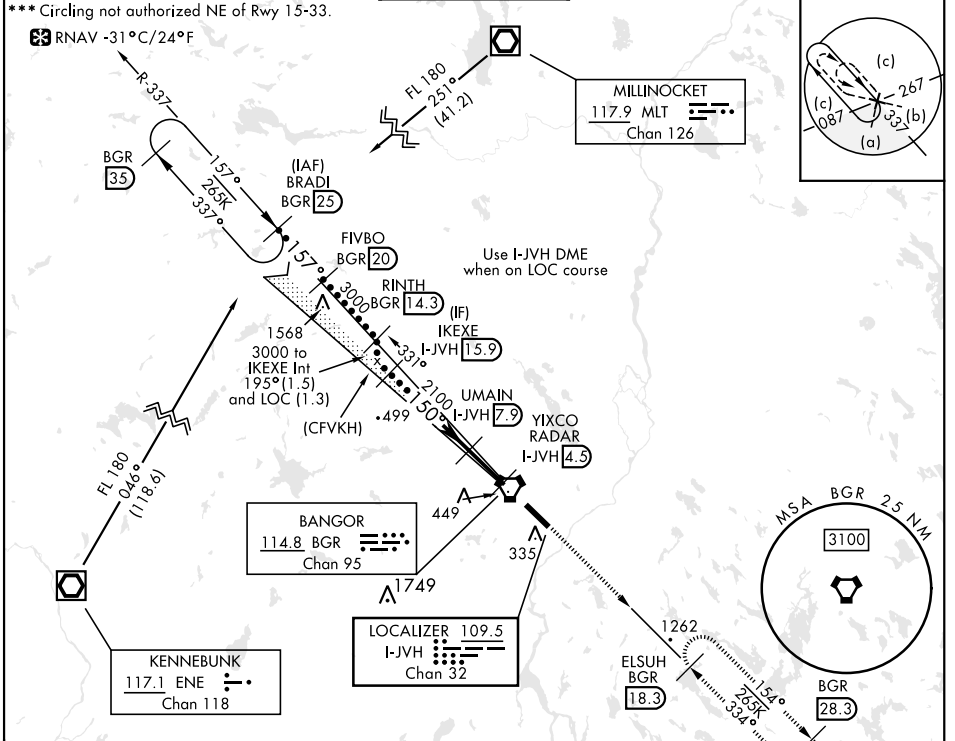
LOC/DME I-JVH 109.5 Chan 32	APCH CRS 150°	Rwy ldg 11,440 TDZE 192 Arprt Elev 192
---	-------------------------	---

AL-39 [USAF]

BANGOR INTL (KBGR)

DME required.	ALSIF-2	MISSED APPROACH: Climb to 3000 via heading 150° and BGR VORTAC R-154 to ELSUH (R-154/18.3 DME) and hold.
---------------	---------	--

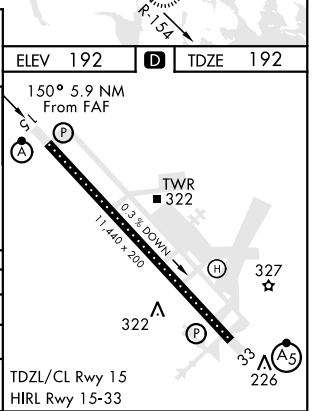
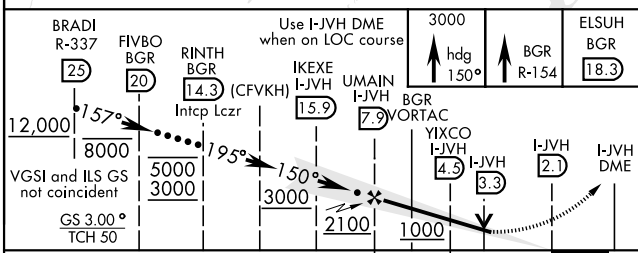
ATIS 127.75	APP CON 118.925 239.3	TOWER 120.7 233.7	GND CON 121.9 348.6	ASR
-----------------------	---------------------------------	-----------------------------	-------------------------------	-----



NE-1, 13 JUN 2024 to 11 JUL 2024

NE-1, 13 JUN 2024 to 11 JUL 2024

EMERG SAFE ALT 100 NM 7500



CATEGORY	C	D	E
S-ILS 15*	392/18	200 (200-½)	
S-LOC 15**	660/50	468 (500-1)	
CIRCLING***	740-1½ 548 (600-1½)	820-2 628 (700-2)	880-2½ 688 (700-2½)

BANGOR, MAINE

44°48'N-68°50'W

BANGOR INTL (KBGR)

Amrd 2 02DEC21

HI-ILS Z or LOC Z RWY 15