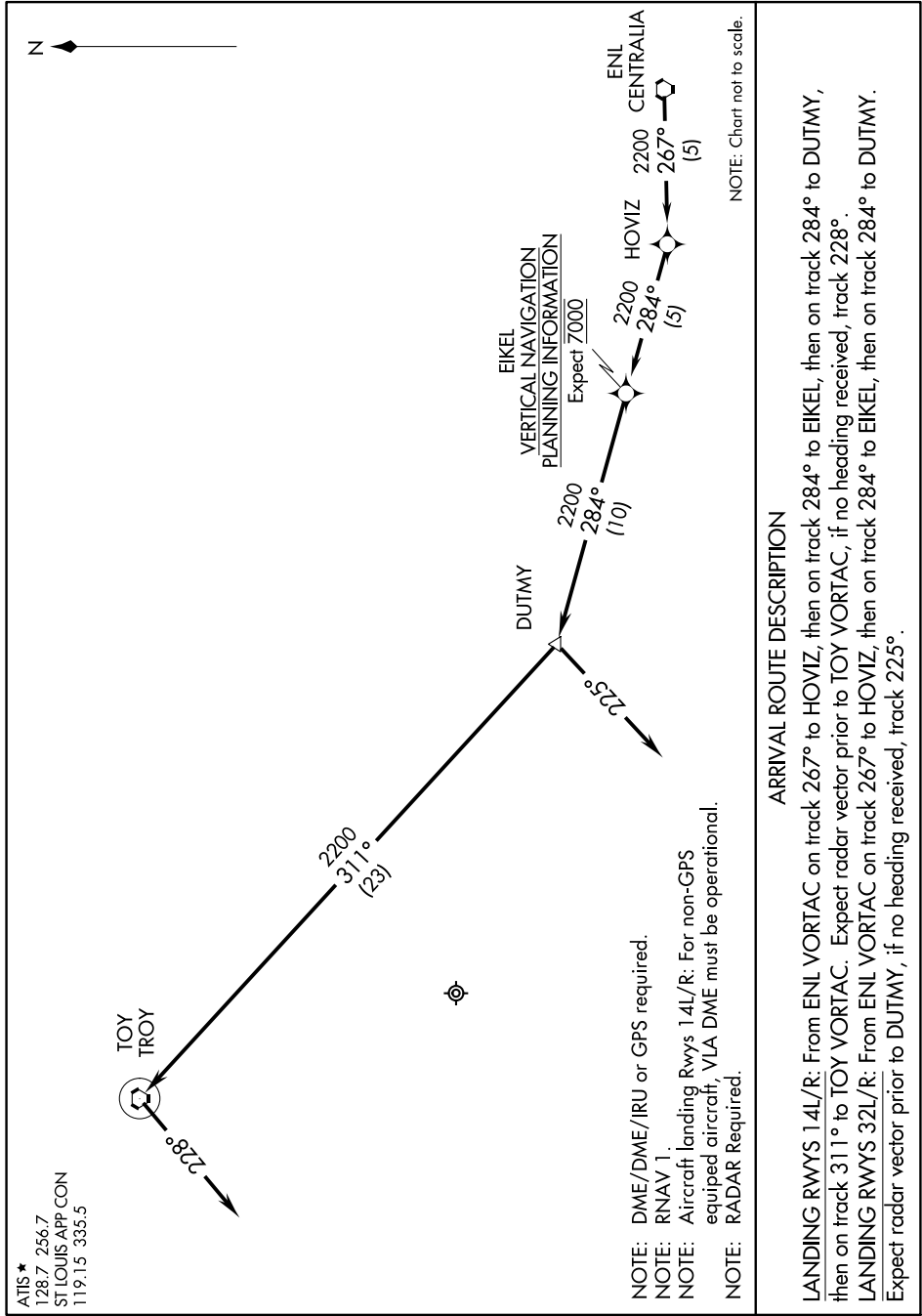


CENTRALIA TWO ARRIVAL (RNAV)

SCOTT AFB/MIDAMERICA ST LOUIS (B.L.V)
BELLEVILLE, ILLINOIS

EC-3, 13 JUN 2024 to 11 JUL 2024



ATIS ★
128.7 256.7
ST LOUIS APP CON
119.15 335.5

NOTE: DME/DME/IRU or GPS required.
NOTE: RNAV 1.
NOTE: Aircraft landing Rwy's 14L/R: For non-GPS equipped aircraft, VLA DME must be operational.
NOTE: RADAR Required.

NOTE: Chart not to scale.

ARRIVAL ROUTE DESCRIPTION

LANDING RWYS 14L/R: From ENL VORTAC on track 267° to HOVIZ, then on track 284° to EIKEL, then on track 284° to DUTMY, then on track 311° to TOY VORTAC. Expect radar vector prior to TOY VORTAC, if no heading received, track 228°.
LANDING RWYS 32L/R: From ENL VORTAC on track 267° to HOVIZ, then on track 284° to EIKEL, then on track 284° to DUTMY. Expect radar vector prior to DUTMY, if no heading received, track 225°.

EC-3, 13 JUN 2024 to 11 JUL 2024

CENTRALIA TWO ARRIVAL (RNAV)

SCOTT AFB/MIDAMERICA ST LOUIS (B.L.V)
BELLEVILLE, ILLINOIS