

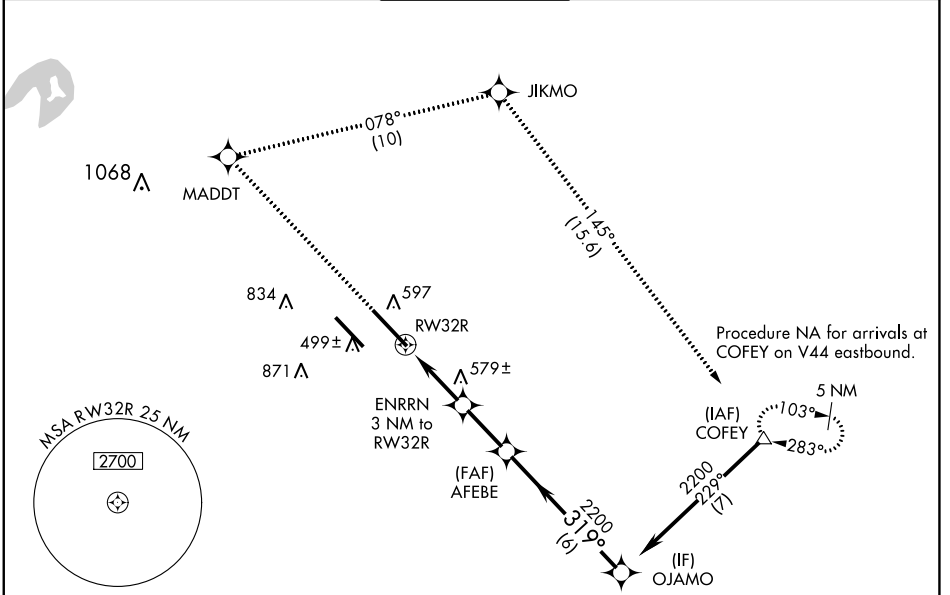
WAAS CH 50518 W32A	APP CRS 319°	Rwy Idg 10000 TDZE 442 Apt Elev 459
--	------------------------	--



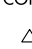
RNAV (GPS) RWY 32R

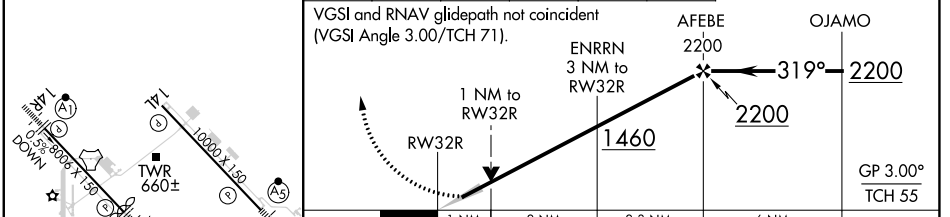
SCOTT AFB/MIDAMERICA ST LOUIS (BLV)


RNP APCH - GPS.		MALSR	MISSED APPROACH: Climb to 2300 direct MADDT and right turn on track 078° to JIKMO and on track 145° to COFEY and hold.
 For uncompensated Baro-VNAV systems, procedure NA below -18°C or above 54°C.  For inop ALS, increase LNAV/VNAV all Cats visibility to RVR 5500.			

ATIS ★ 128.7 256.7	ST LOUIS APP CON 125.2 281.5	SCOTT TOWER 128.25 253.5	GND CON 119.2 275.8	CLNC DEL 119.875 263.025
------------------------------	--	------------------------------------	-------------------------------	------------------------------------



ELEV 459	D TDZE 442	2300	MADDT	JIKMO	COFEY
		↑		tr 078° 	tr 145° 



CATEGORY	A	B	C	D
LPV DA	642/24 200 (200-½)			
LNAV/VNAV DA	804/35 362 (400-⅝)			
LNAV MDA	840/24	398 (400-½)	840/35	398 (400-⅝)
 CIRCLING	1000-1 541 (600-1)	1120-1 661 (700-1)	1240-2¼ 781 (800-2¼)	1240-2½ 781 (800-2½)

REIL Rwy 14L
HIRL Rwy 14R-32L and 14L-32R

SCOTT AFB/MIDAMERICA ST LOUIS (BLV)
38°33'N-89°50'W
RNAV (GPS) RWY 32R

EC-3, 13 JUN 2024 to 11 JUL 2024

EC-3, 13 JUN 2024 to 11 JUL 2024