

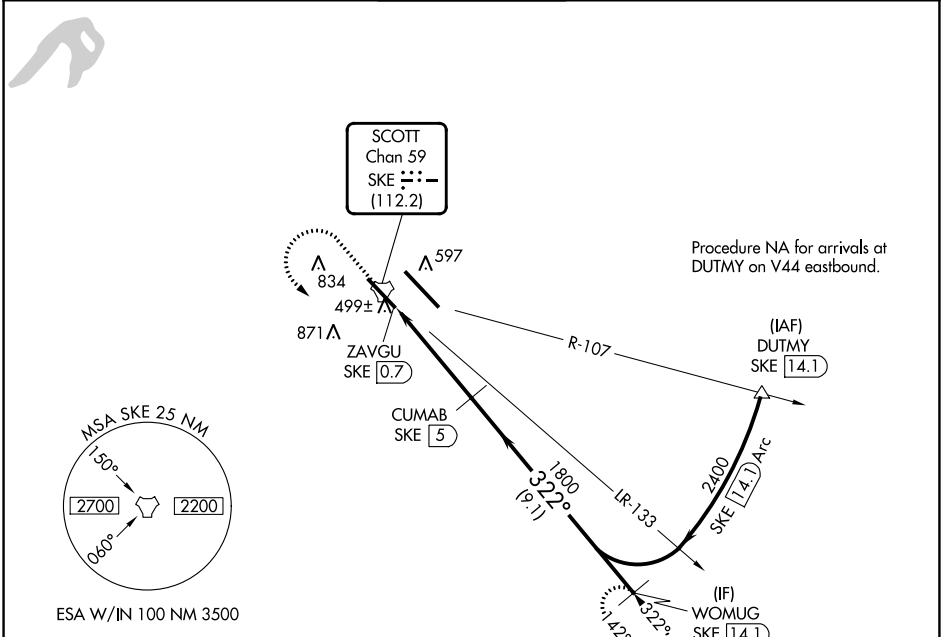
TACAN SKE Chan <b>59</b> (112.2)	APP CRS <b>322°</b>	Rwy ldg TDZE Apt Elev	<b>7822</b> <b>439</b> <b>459</b>
--	------------------------	-----------------------------	---

# TACAN RWY 32L

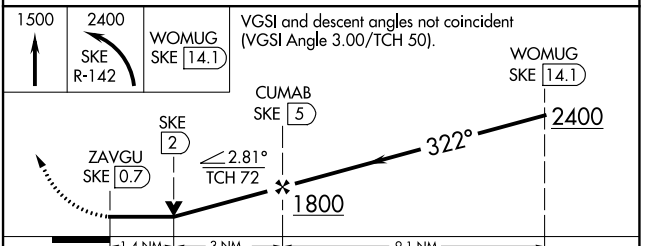
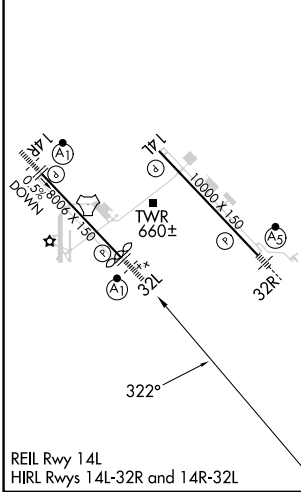
SCOTT AFB/MIDAMERICA ST LOUIS (BLV)

 <b>ASR</b>	For inop ALS, increase S-32L Cat C/D/E visibility to 1½ SM.	 	MISSED APPROACH: Climb to 1500 then climbing left turn to 2400 on SKE R-142 to WOMUG/14.1 DME and hold.

ATIS ★ <b>128.7 256.7</b>	ST LOUIS APP CON <b>125.2 281.5</b>	SCOTT TOWER <b>128.25 253.5</b>	GND CON <b>119.2 275.8</b>	CLNC DEL <b>119.875 263.025</b>
------------------------------	--	------------------------------------	-------------------------------	------------------------------------



ELEV 459	<b>D</b>	TDZE 439
----------	----------	----------



CATEGORY	A	B	C	D	E
S-32L	920/24	481 (500-½)	920/50	481 (500-1)	920/60 481 (500-1½)
<input checked="" type="checkbox"/> CIRCLING	1000-1 541 (600-1)	1120-1 661 (700-1)	1240-2¼ 781 (800-2¼)	1240-2½ 781 (800-2½)	1240-2¾ 781 (800-2¾)

# TACAN RWY 32L

EC-3, 13 JUN 2024 to 11 JUL 2024

EC-3, 13 JUN 2024 to 11 JUL 2024