


VORTAC BGS 117.2 Chan 119	APP CRS 180°	Rwy Idg 8802 TDZE 2562 Apt Elev 2573
---	------------------------	---

VOR/DME RWY 17


BIG SPRING McMAHON-WRINKLE (BPG)

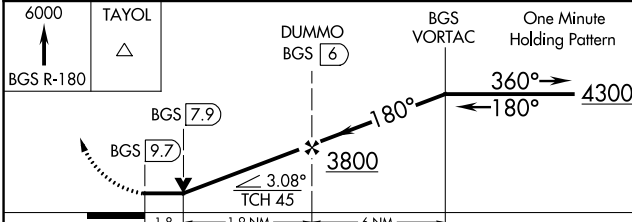
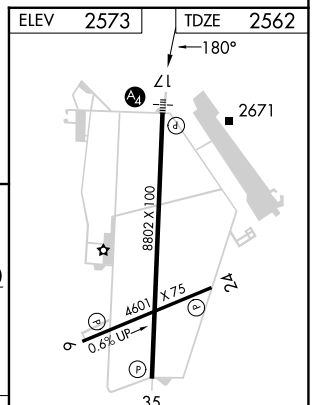
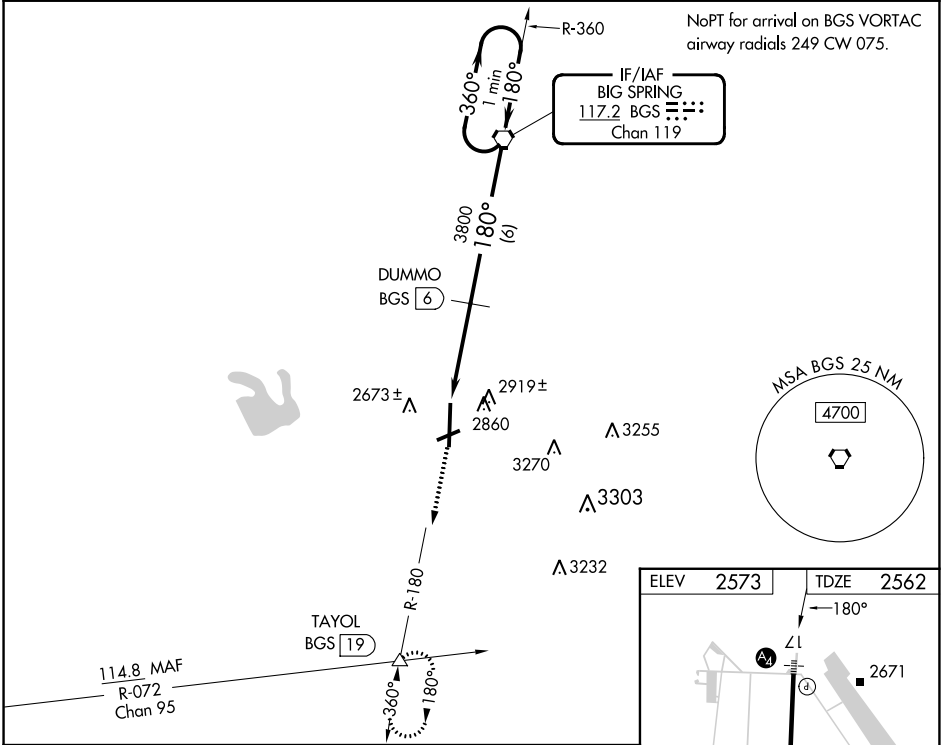
⚠ When VGSI inoperative, circling Rwy 6 NA at night. Circling NA east of Rwy 17-35. Inoperative table does not apply to S-17 Cat C, when using Midland Intl Air and Space Port altimeter setting inoperative table does not apply to S-17 Cat B. VDP NA when using Midland Intl Air and Space Port altimeter setting. When local altimeter setting not received, use Midland Intl Air and Space Port altimeter setting and increase all MDA 140 feet, increase S-17 Cats B, C, and D and Circling Cats C and D visibility 1/2 mile, Circling Cat B visibility 1/4 mile.


SSALS
 MISSED APPROACH: Climb to 6000 via BGS VORTAC R-180 to TAYOL INT/BGS 19 DME and hold, continue climb-in-hold to 6000.


AWOS-3PT
118.025

FORT WORTH CENTER
133.7 350.2

UNICOM
122.8 (CTAF) 



CATEGORY	A	B	C	D
S-17	3180-3/4 618 (700-3/4)		3180-1 3/4 618 (700-1 3/4)	3180-2 618 (700-1)
 CIRCLING	3180-1 607 (700-1)		3180-1 3/4 607 (700-1 3/4)	3180-2 607 (700-2)

MIRL Rwy 6-24 and 17-35 

SC-2, 13 JUN 2024 to 11 JUL 2024

SC-2, 13 JUN 2024 to 11 JUL 2024