

BILLINGS, MONTANA

# HI-ILS Z or LOC Z RWY 10L

LOC/DME I-BIL <b>111.5</b> Chan <b>52</b>	APCH CRS <b>102°</b>	Rwy Idg <b>10,518</b> TDZE <b>3585</b> Arpt Elev <b>3662</b>
---	-------------------------	--

AL-48 [USAF]

BILLINGS LOGAN INTL (KBIL)

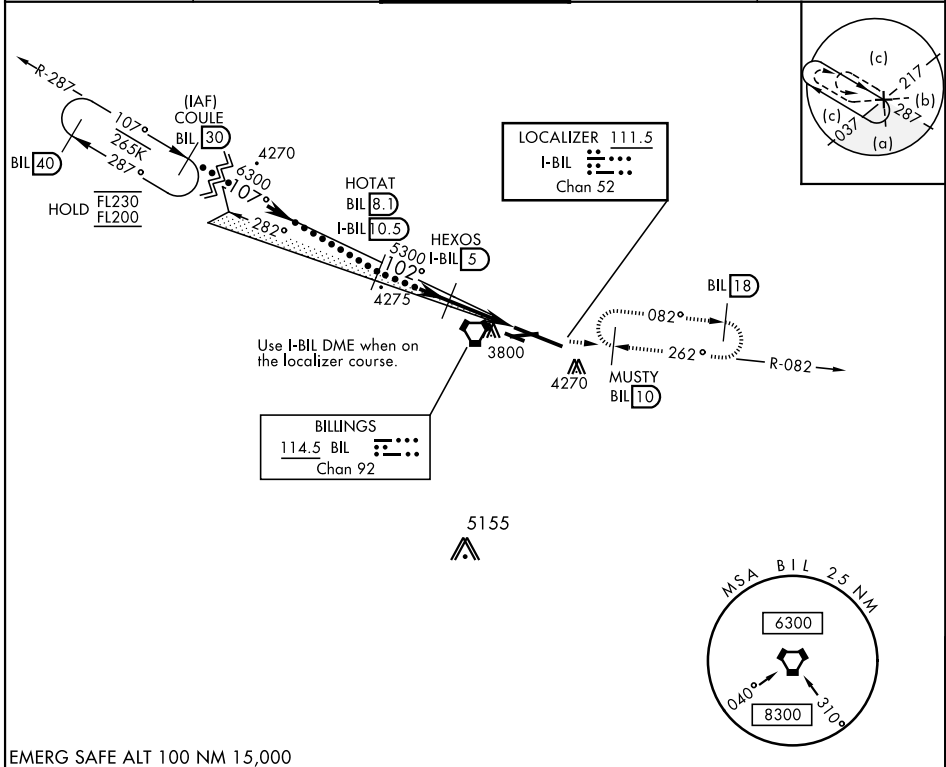
DME required. RADAR required for procedure entry.



MISSED APPROACH: Climb to 5700 on BIL VORTAC R-082 to MUSTY/10 DME and hold.

▼ \* When ALS inop, increase CAT E RVR to 40.  
\*\* When ALS inop, increase CAT CDE RVR to 60.

ATIS <b>126.3</b>	BILLINGS APP CON <b>120.5 284.6</b>	BILLINGS TOWER <b>127.2 257.8</b>	GND CON <b>121.9</b>	CLNC DEL <b>121.9</b>
----------------------	--	--------------------------------------	-------------------------	--------------------------



NW-1, 13 JUN 2024 to 11 JUL 2024

NW-1, 13 JUN 2024 to 11 JUL 2024

EMERG SAFE ALT 100 NM 15,000

COULE (BIL 30) FL200	HOTAT (BIL 8.1) I-BIL (10.5)	HEXOS (I-BIL 5)	ZOBUM (I-BIL 2.1)	LOC DME (I-BIL 1)	5700 BIL R-082	MUSTY BIL (10)	ELEV 3662	TDZE 3585
GS 3.00° TCH 51	6300	5300	4360	2.1 NM	2.9 NM	0.2	102° 5.2 NM from LOM	3517
							3800 x 75	5901 x 75
							0.9% DOWN	1.9% UP
							3761	3619
							TWR 3703	10,518 x 150
CATEGORY	C	D	E					
S-ILS 10L *	3785/24		200 (200-½)					
S-LOC 10L **	4000/40		415 (500-¾)					
CIRCLING	4180-1½ 518 (600-1½)		4580-3 918 (1000-3)					
							REIL Rwy 25 and 28R	
							HIRL Rwy 10L-28R	
							MIRL Rwy 7-25 and 10R-28L	

BILLINGS, MONTANA

45°48'N-108°33'W

BILLINGS LOGAN INTL (KBIL)

Amdt 4A 22APR21

# HI-ILS Z or LOC Z RWY 10L