

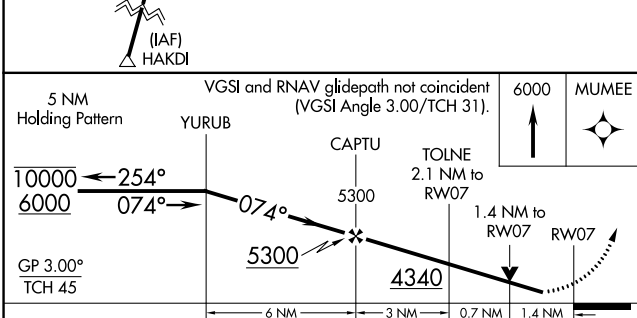
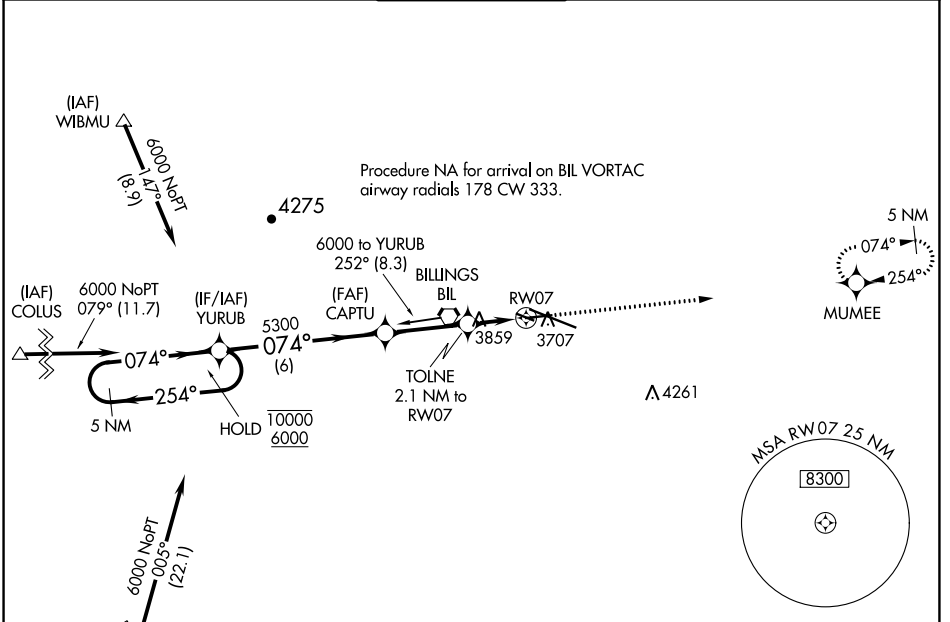
WAAS CH 87127 W07A	APP CRS 074°	Rwy Idg TDZE Apt Elev	5501 3636 3662
--	------------------------	-----------------------------	---

RNAV (GPS) RWY 7

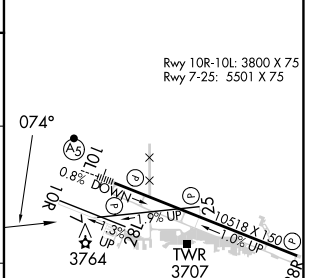
BILLINGS LOGAN INTL (BIL)

RNP APCH - GPS		<p>▼ Rwy 7 helicopter visibility reduction below 3/4 SM NA. ▲ For uncompensated Baro-VNAV systems, LNAV/VNAV NA below -25°C or above 53°C.</p>		MISSED APPROACH: Climb to 6000 direct MUMEE and hold.	
----------------	--	---	--	---	--

ATIS 126.3	BILLINGS APP CON 120.5 284.6	BILLINGS TOWER 127.2 257.8	GND CON 121.9	CINC DEL 121.9
----------------------	--	---	-------------------------	--------------------------



ELEV 3662	D TDZE 3636
-----------	--------------------



CATEGORY	A	B	C	D
LPV DA	3886-3/4		250 (300-3/4)	
LNAV/VNAV DA	3950-7/8		314 (300-7/8)	
LNAV MDA	4120-1	484 (500-1)	4120-1 3/8	484 (500-1 3/8)
C CIRCLING	4160-1	498 (500-1)	4180-1 1/2	4580-3
			518 (600-1 1/2)	918 (1000-3)

REIL Rwsy 25 and 28R	HIRL Rwy 10L-28R
MIRL Rwsy 7-25 and 10R-28L	

NW-1, 13 JUN 2024 to 11 JUL 2024

NW-1, 13 JUN 2024 to 11 JUL 2024