

LOC/DME I-ROE 109.5 Chan 32	APP CRS 238°	Rwy Idg 10801 TDZE 641 Apt Elev 650
---	------------------------	--

ILS or LOC RWY 24

BIRMINGHAM-SHUTTLESWORTH INTL (BHM)

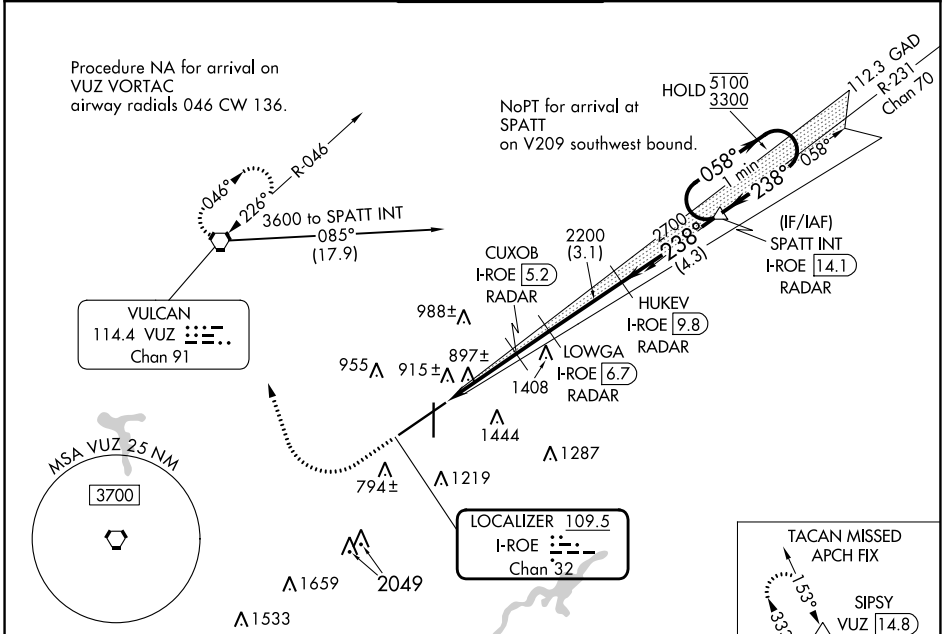
DME or RADAR required.

▼ Rwy 24 helicopter visibility reduction below RVR 4000 NA. For inop ALS, increase S-ILS 24 Cat E visibility to RVR 4000 and increase S-LOC 24 Cat A/B visibility to RVR 5500, and Cat C/D/E to 1 ½ SM. **RVR 1800 authorized with use of FD or AP or HUD to DA.

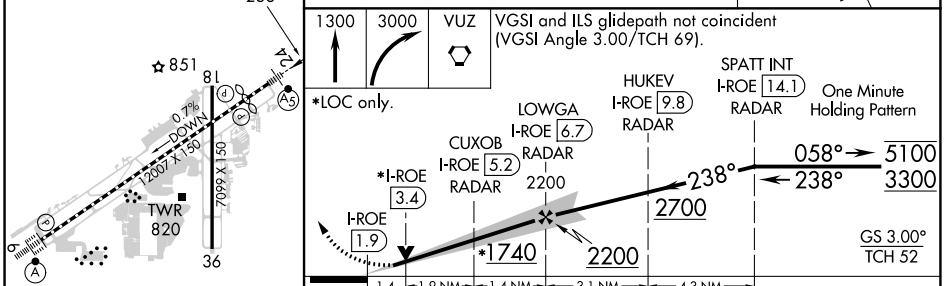
MALSR

MISSED APPROACH: Climb to 1300 then climbing right turn to 3000 direct VUZ VORTAC and hold. (TACAN aircraft continue on VUZ VORTAC R-333 to SIPSY/VUZ 14.8 DME and hold NW, right turn, 153° inbound).

ATIS 119.4 270.1	BIRMINGHAM APP CON 123.8 256.8	BIRMINGHAM TOWER 119.9 317.725	GND CON 121.7 348.6	CLNC DEL 125.675 305.2
----------------------------	--	--	-------------------------------	----------------------------------



ELEV 650	D	TDZE 641	1541	1676
----------	----------	----------	------	------



REIL Rws 18 and 36 TDZ/CL Rwy 6 HIRL Rwy 6-24 MIRL Rwy 18-36	CATEGORY	A	B	C	D	E
	S-ILS 24**	841/24 200 (200-½)				
	S-LOC 24	1160/40	519 (600-¾)	1160/55	519 (600-1)	

SE-4, 13 JUN 2024 to 11 JUL 2024

SE-4, 13 JUN 2024 to 11 JUL 2024