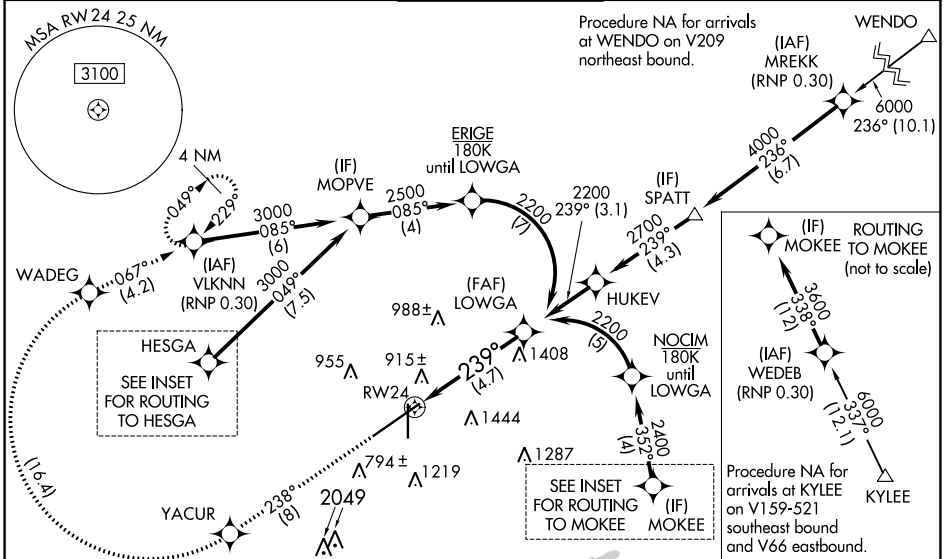


APP CRS	Rwy Idg	<b>10801</b>
<b>239°</b>	TDZE	<b>641</b>
	Apt Elev	<b>650</b>

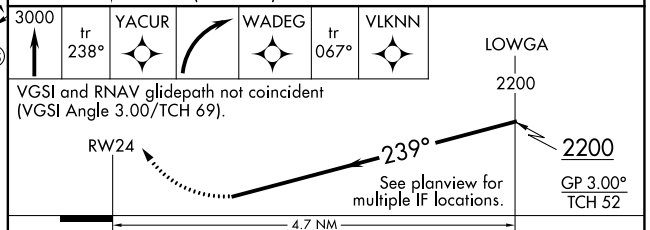
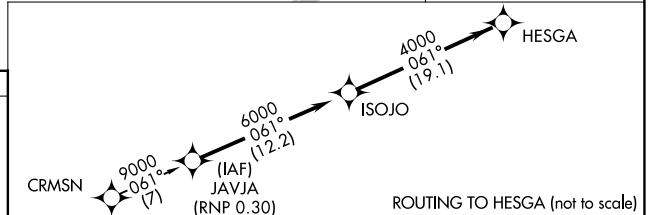
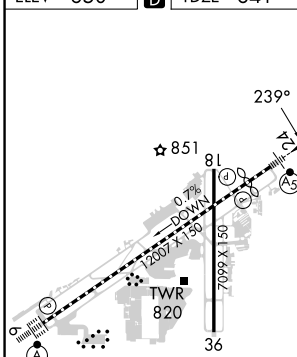
# RNAV (RNP) Z RWY 24

BIRMINGHAM-SHUTTLESWORTH INTL (BHM)

RNP AR APCH. RF required.		MALSR	MISSED APPROACH: Climb to 3000 on track 238° to YACUR then, right turn to WADEG, then on track 067° to VLKNN and hold.	
<p>▼ For uncompensated Baro-VNAV systems, procedure NA below -8°C or above 54°C. For inop ALS, increase RNP 0.15 all Cats visibility to 1 3/8 and increase RNP 0.30 all Cats visibility to 1 3/4 SM.</p>				
ATIS	BIRMINGHAM APP CON	BIRMINGHAM TOWER	GND CON	CLNC DEL
<b>119.4 270.1</b>	<b>123.8 256.8</b>	<b>119.9 317.725</b>	<b>121.7 348.6</b>	<b>125.675 305.2</b>



ELEV	650	D	TDZE	641
------	-----	---	------	-----



CATEGORY	A	B	C	D
RNP 0.15 DA		1149-1	508 (500-1)	
RNP 0.30 DA		1243-1 3/8	602 (600-1 3/8)	

**AUTHORIZATION REQUIRED**

SE-4, 13 JUN 2024 to 11 JUL 2024

SE-4, 13 JUN 2024 to 11 JUL 2024