

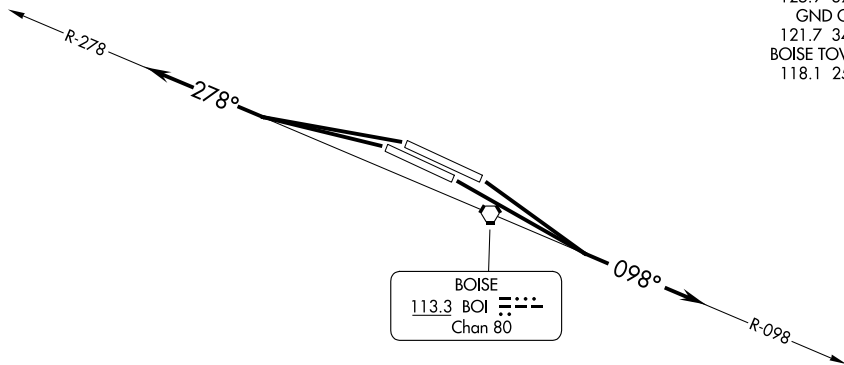
# BOISE THREE DEPARTURE

AL-57 (FAA)

BOISE AIR TRML/GOWEN FLD (BOI)  
BOISE, IDAHO

**TOP ALTITUDE:  
16000**

BIG SKY DEP CON  
 126.9 351.85 (279°-097°)  
 119.6 269.4 (098°-278°)  
 D-ATIS  
 123.9 290.4  
 CLNC DEL  
 125.9 323.2  
 GND CON  
 121.7 348.6  
 BOISE TOWER  
 118.1 257.8



NW-1, 13 JUN 2024 to 11 JUL 2024

NW-1, 13 JUN 2024 to 11 JUL 2024

NOTE: RADAR required.

### TAKEOFF MINIMUMS

Rwys 28L/R: Standard.

Rwys 10L/R: Standard with minimum climb of 240' per NM to 5700.

NOTE: Chart not to scale.



### DEPARTURE ROUTE DESCRIPTION

TAKEOFF RUNWAY 10L/R: Climb to 16000 or lower assigned altitude on BOI VORTAC R-098, thence. . . .

TAKEOFF RUNWAY 28L/R: Climb to 16000 or lower assigned altitude on BOI VORTAC R-278, thence. . . .

. . . .Expect RADAR vectors to assigned route, expect filed altitude 10 minutes after departure.

LOST COMMUNICATIONS: If not in contact with Boise Departure Control at 10000 or assigned altitude if lower, continue climb to assigned altitude and thence on assigned route.

# BOISE THREE DEPARTURE