

RNAV (RNP) X RWY 28R

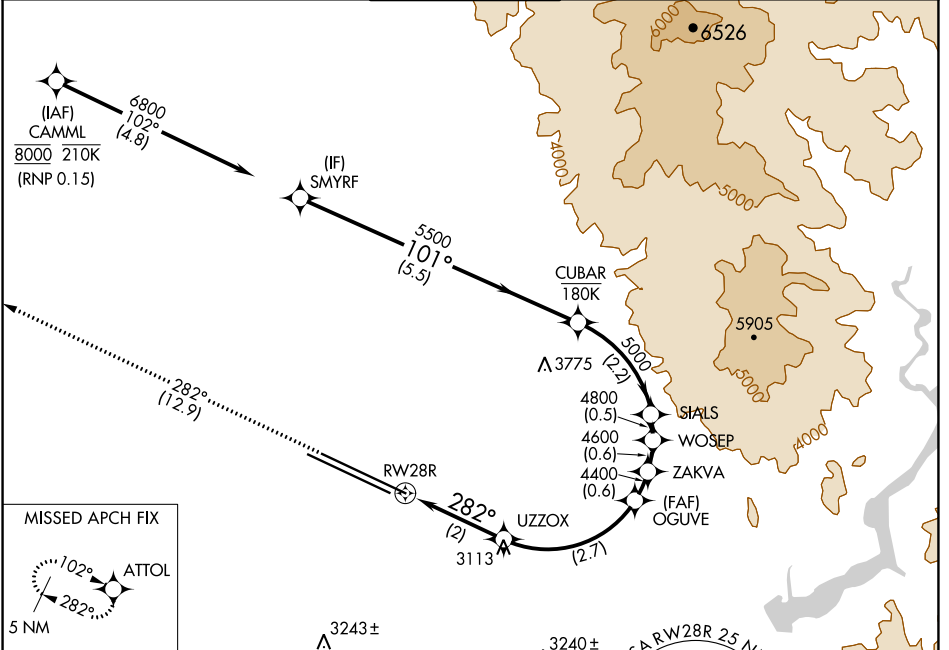
BOISE AIR TRML/GOWEN FLD (BOI)

APP CRS 282°	Rwy ldg 10000
	TDZE 2871
	Apt Elev 2871

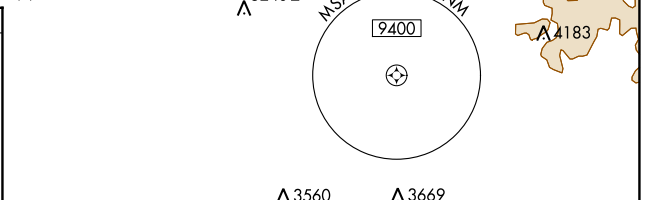
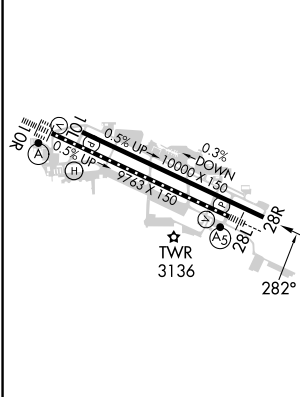
NA For uncompensated Baro-VNAV systems, procedure NA below -1.4°C (7°F) or above 52°C (126°F). RF required. GPS required.

MISSED APPROACH: Climb to 6000 on track 282° to ATTOL and hold.

D-ATIS 123.9 290.4	BIG SKY APP CON 119.6 269.4	BOISE TOWER 118.1 257.8	GND CON 121.7 348.6	CLNC DEL 125.9 323.2
------------------------------	---------------------------------------	-----------------------------------	-------------------------------	--------------------------------



ELEV 2871	D	TDZE 2871
------------------	----------	------------------



6000	ATTOL	VGSi and RNAV glidepath not coincident (VGSi Angle 3.00/TCH 70).					SMYRF
tr 282°		OGUVE	ZAKVA	WOSEP	SIALS	CUBAR	6800
		4400	4600	4800	5000	5500	
		3548	4400	4600	4800	5000	GP 3.00°
			4400				TCH 55
		2 NM	2.7 NM	0.6 NM	0.6 NM	0.5 NM	2.2 NM
							5.5 NM

REIL Rwy 10L
TDZ/CL Rwy 10R and 28L
HIRL Rwy 10L-28R and 10R-28L

CATEGORY	A	B	C	D
RNP 0.15 DA	3288-1 $\frac{3}{8}$		417 (500-1 $\frac{3}{8}$)	

AUTHORIZATION REQUIRED

NW-1, 13 JUN 2024 to 11 JUL 2024

NW-1, 13 JUN 2024 to 11 JUL 2024