

CELTK SEVEN DEPARTURE (RNAV)

AL-58 (FAA)

BOSTON, MASSACHUSETTS

NE-1, 13 JUN 2024 to 11 JUL 2024

RNAV 1 - DME/DME/IRU or GPS.

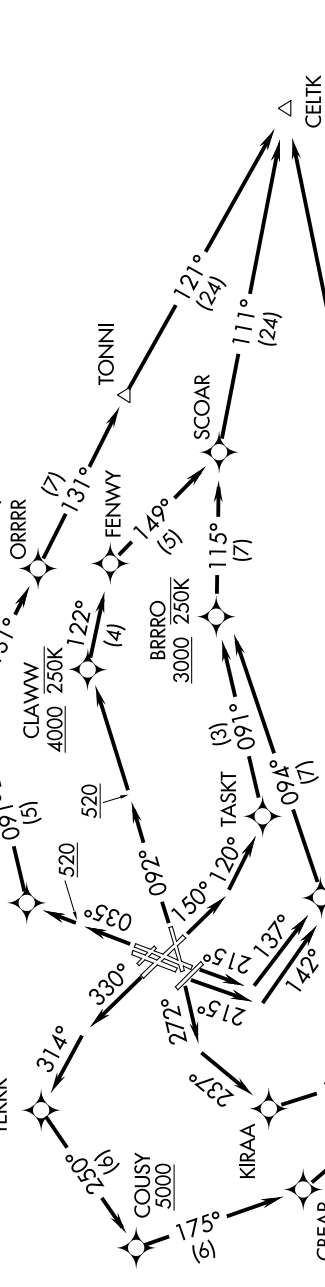
RADAR required for non-GPS equipped aircraft.

BOSTON DEP CON
133.0
D-ATIS 135.0
CLNC DEL
121.65 257.8
CPDLC
GND CON
121.75 121.9
BOSTON TOWER
128.8 257.8 (WEST)
132.225 257.8 (EAST)

TEKKK
314°
COUSY 5000
250°
175°
KIRAA
237°
CBEAR
154°
187°

TAKEOFF MINIMUMS:
Rwy 4L, 14, 15L, 32, 33R: NA-ATC.
Rwy 4R, 9, 15R, 22R, 33L: Standard with minimum climb of 500'/NM to 520.
Rwy 22L: 300-1 with minimum climb of 500'/NM to 520, if tower reports no tall vessels in the departure area.
Rwy 27: Standard with minimum climb of 500'/NM to 1300.

NHANT
091° (5)
520
HURBE 4000
137° (5)
CLAWW 4000 250K
122° (4)
520
ORRRR
137° (7)
FENNY
140° (5)
BRRRO 3000 250K
115° (7)
120°
TASKT (3)
091°
094° (7)
TJAYY 1200 210K
142°
COLYN

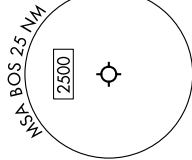


△ FRILL

△ CELTK

N

095° (42)



NOTE: Jet aircraft only.

NOTE: Chart not to scale.

(NARRATIVE ON FOLLOWING PAGE)

NE-1, 13 JUN 2024 to 11 JUL 2024

CELTK SEVEN DEPARTURE (RNAV)