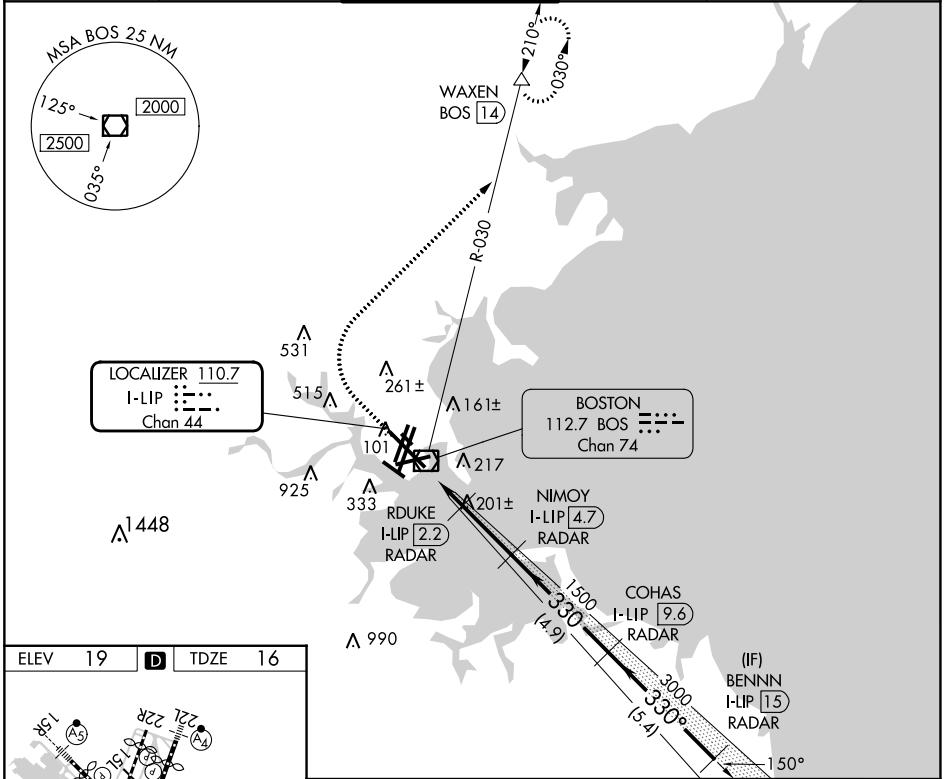


LOC/DME I-LIP	APP CRS	Rwy Idg	10083
110.7	330°	TDZE	16
Chan 44		Apt Elev	19

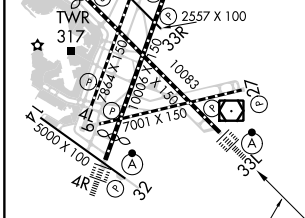
ILS or LOC RWY 33L

GENERAL EDWARD LAWRENCE LOGAN INTL (BOS)

RADAR required for procedure entry. DME required.		ALSIF-2	MISSED APPROACH: Climb to 1500 then climbing right turn to 3000 on BOS VOR/DME R-030 to WAXEN/BOS 14 DME and hold.		
D-ATIS	BOSTON APP CON	BOSTON TOWER	GND CON	CLNC DEL	CPDLC
135.0	120.6 263.1	128.8 257.8 (WEST) 132.225 257.8 (EAST)	121.75 121.9	121.65 257.8	



ELEV 19	D	TDZE 16
---------	----------	---------



TDZ/CL Rwy 4R, 15R and 33L
REIL Rwy 4L, 27 and 32
MIRL Rwy 15L-33R
HIRL Rwy 4L-22R, 4R-22L, 9-27, 14-32 and 15R-33L

FAF to MAP 4.5 NM

Knots	60	90	120	150	180
Min:Sec	4:30	3:00	2:15	1:48	1:30

1500	3000	WAXEN	VGSI and ILS glidepath not coincident (VGSI Angle 3.00/TCH 68).	
↑	↻	BOS R-030		
BENNN I-LIP 15 RADAR		4000		
COHAS I-LIP 9.6 RADAR		3000		
RDUKE I-LIP 2.2 RADAR		1500		
NIMOY I-LIP 4.7 RADAR		700		
I-LIP 0.2		1500		
I-LIP 1.4		3000		
I-LIP 1.2 NM		0.8 NM		2.5 NM
CATEGORY		A B C D		
S-ILS 33L		216/18 200 (200-½)		
S-LOC 33L		460/24 444 (500-½)		460/45 444 (500-¾)

NE-1, 13 JUN 2024 to 11 JUL 2024

NE-1, 13 JUN 2024 to 11 JUL 2024