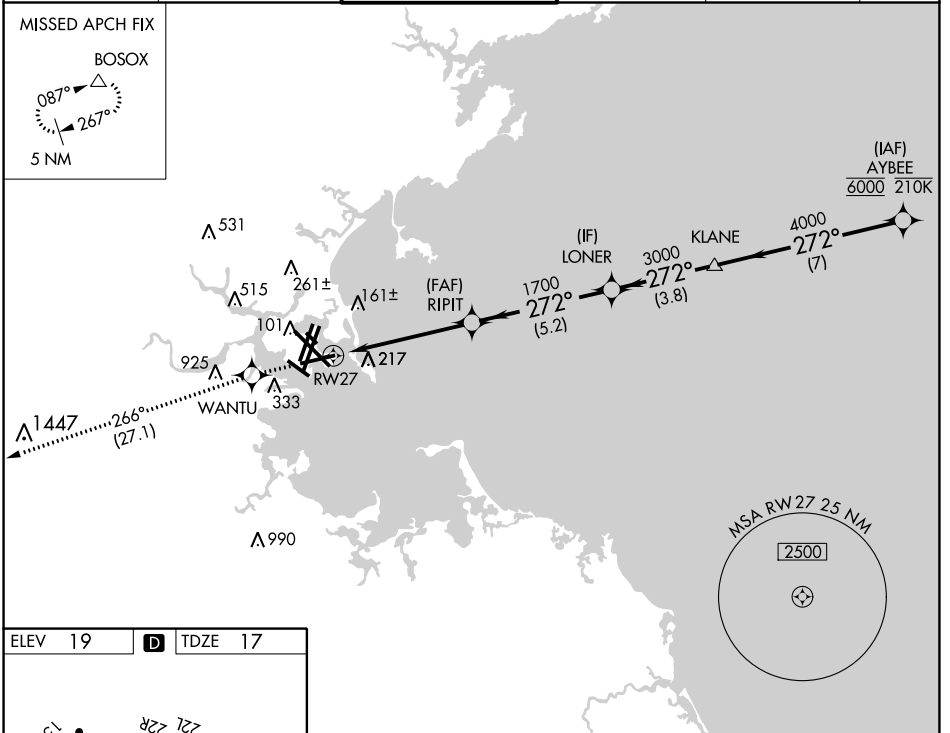


APP CRS	Rwy Idg	<b>7001</b>
<b>272°</b>	TDZE	<b>17</b>
	Apt Elev	<b>19</b>

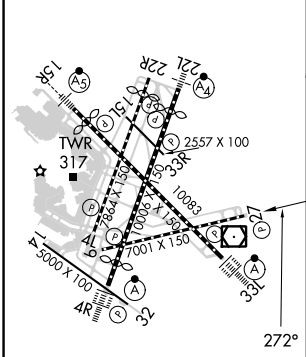
# RNAV (GPS) RWY 27

GENERAL EDWARD LAWRENCE LOGAN INTL (BOS)

RNP APCH - GPS.			MISSED APPROACH: Climb to 3000 direct WANTU and on track 266° to BOSOX and hold.		
▼ For uncompensated Baro-VNAV systems, LNAV/VNAV NA below -15°C or above 54°C.					
D-ATIS	BOSTON APP CON	BOSTON TOWER	GND CON	CLNC DEL	CPDLC
<b>135.0</b>	<b>120.6 263.1</b>	<b>128.8 257.8 (WEST)</b> <b>132.225 257.8 (EAST)</b>	<b>121.75 121.9</b>	<b>121.65 257.8</b>	

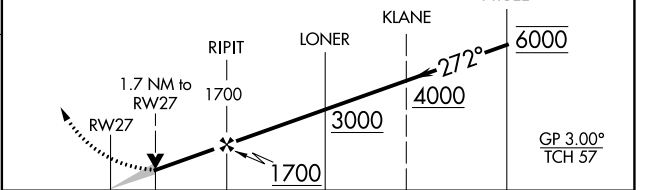


ELEV 19	<b>D</b>	TDZE 17
---------	----------	---------



TDZ/CL Rwy 4R, 15R and 33L  
 REIL Rwy 4L, 27 and 32  
 MIRL Rwy 15L-33R  
 HIRL Rwy 4L-22R, 4R-22L, 9-27, 14-32 and 15R-33L

3000	WANTU	tr 266°	BOSOX	VGSI and RNAV glidepath not coincident (VGSI Angle 3.00/TCH 71).
------	-------	---------	-------	--



CATEGORY	A	B	C	D
LNAV/VNAV DA	510-1 $\frac{3}{8}$ 493 (500-1 $\frac{3}{8}$ )			
LNAV MDA	640-1 $\frac{1}{2}$	623 (700-1 $\frac{1}{2}$ )	640-1 $\frac{3}{4}$	623 (700-1 $\frac{3}{4}$ )

NE-1, 13 JUN 2024 to 11 JUL 2024

NE-1, 13 JUN 2024 to 11 JUL 2024