

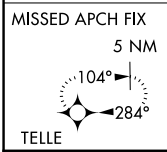
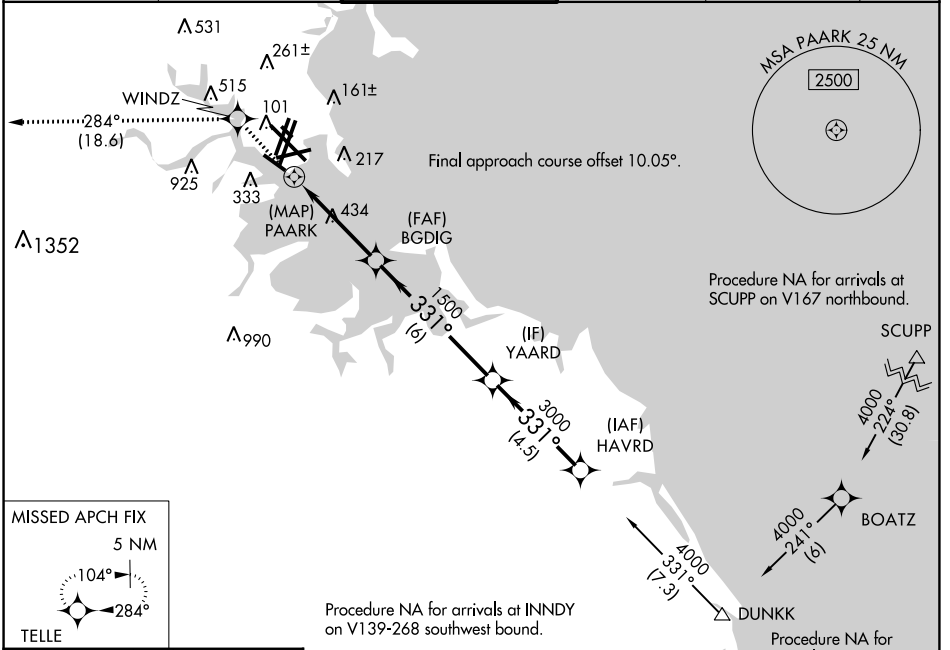
APP CRS	Rwy Idg	<b>5000</b>
<b>331°</b>	TDZE	<b>19</b>
	Apt Elev	<b>19</b>

# RNAV (GPS) RWY 32

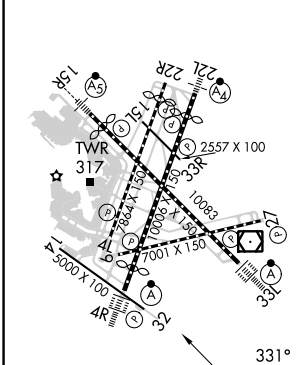
GENERAL EDWARD LAWRENCE LOGAN INTL (BOS)

RNP APCH - GPS.		MISSED APPROACH: Climb to 3000 direct WINDZ and on track 284° to TELLE and hold.			
-----------------	--	--	--	--	--

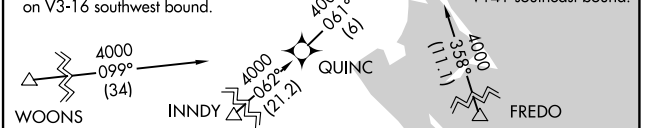
D-ATIS	BOSTON APP CON	BOSTON TOWER	GND CON	CLNC DEL	CPDLC
<b>135.0</b>	<b>120.6 263.1</b>	<b>128.8 257.8 (WEST)</b> <b>132.225 257.8 (EAST)</b>	<b>121.75 121.9</b>	<b>121.65 257.8</b>	



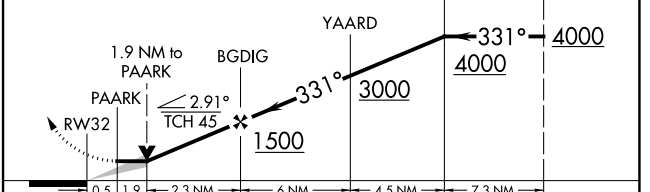
ELEV 19	<b>D</b>	TDZE 19
---------	----------	---------



TDZ/CL Rws 4R, 15R and 33L  
 REIL Rws 4L, 27 and 32  
 MIRL Rwy 15L-33R  
 HIRL Rws 4L-22R, 4R-22L, 9-27, 14-32 and 15R-33L



3000	WINDZ	TELLE
↑	✦	✦
	tr 284°	



CATEGORY	A	B	C	D
LNAV MDA	820-1 801 (900-1)	820-1¼ 801 (900-1¼)	820-2½	801 (900-2½)

NE-1, 13 JUN 2024 to 11 JUL 2024

NE-1, 13 JUN 2024 to 11 JUL 2024